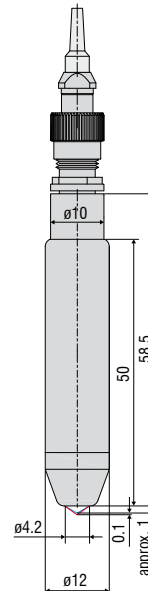
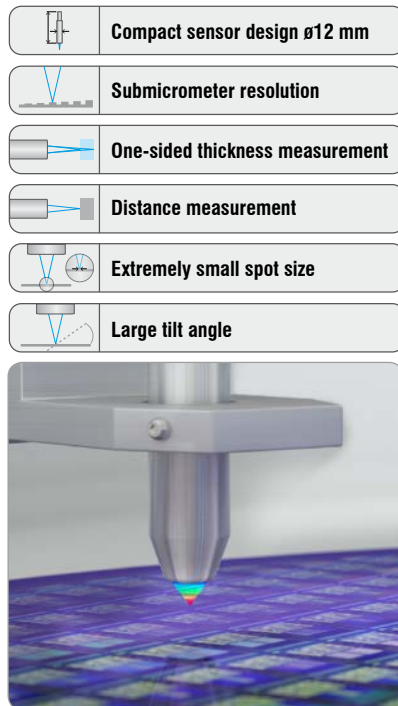




More Precision

confocalDT // Confocal chromatic measuring system





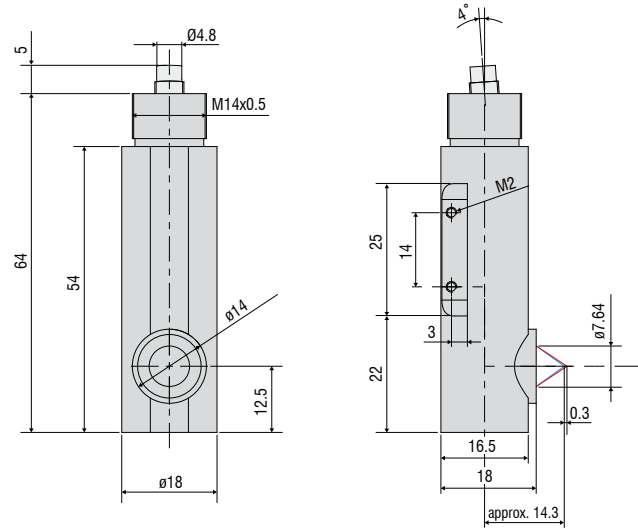
Dimensions in mm, not to scale

Model	IFS2407-0.1	IFS2407-0.1(001)
Measuring range	0.1 mm	
Start of measuring range	approx.	1 mm
Resolution ¹⁾	3 nm	
Linearity ²⁾	Displacement and distance	< ± 0.05 µm
	Thickness	< ± 0.1 µm
Light spot diameter	3 µm	4 µm
Max. tilt angle ³⁾	± 48°	
Numerical aperture	0.8	0.7
Connection	pluggable optical fiber via FC socket, standard length 3 m; extension up to 50 m; bending radius: static 30 mm; dynamic 40 mm	
Mounting	Clamping, mounting adapter (see accessories)	
Temperature range	Storage	-20 ... +70 °C
	Operation	+5 ... +70 °C
Shock (DIN-EN 60068-2-29)	15 g / 6 ms in XY axes / 1000 shocks per axis	
Vibration (DIN-EN 60068-2-6)	2 g / 20 Hz ... 500 Hz in XY axes / 10 cycles per axis	
Protection class (DIN-EN 60529)	IP65, front operated	
Material	stainless steel housing, glass lenses	
Weight	36 g	
Special feature	high numerical aperture	light-intensive model

¹⁾ Average from 512 values at 1 kHz, near to the midrange onto optical flat

²⁾ All data at constant ambient temperature (25 ± 1 °C) against optical flat; specifications can change when measuring different materials.

³⁾ Maximum sensor tilt angle that produces a usable signal on reflecting surfaces. The accuracy decreases when approaching the limit values.



Dimensions in mm, not to scale

Model	IFS2407/90-0,3	
Measuring range	0.3 mm	
Start of measuring range	approx.	14.3 mm ⁴⁾
Resolution ¹⁾	10 nm	
Linearity ²⁾	Displacement and distance	< ± 0.15 μm
	Thickness	< ± 0.3 μm
Light spot diameter	6 μm	
Max. tilt angle ³⁾	± 27°	
Numerical aperture	0.5	
Connection	pluggable optical fiber via FC socket, type C2407-x; standard length 3 m; extension up to 50 m; bending radius: static 30 mm; dynamic 40 mm	
Mounting	Mounting holes (2x M2)	
Temperature range	Storage	-20 ... +70 °C
	Operation	+5 ... +70 °C
Shock (DIN-EN 60068-2-29)	15 g / 6 ms in XY axes / 1000 shocks per axis	
Vibration (DIN-EN 60068-2-6)	2 g / 20 Hz ... 500 Hz in XY axes / 10 cycles per axis	
Protection class (DIN-EN 60529)	IP65, front operated	
Material	Aluminum housing, glass lenses	
Weight	30 g	

¹⁾ Average from 512 values at 1 kHz, near to the midrange onto optical flat

²⁾ All data at constant ambient temperature (25 ± 1 °C) against optical flat; specifications can change when measuring different materials.

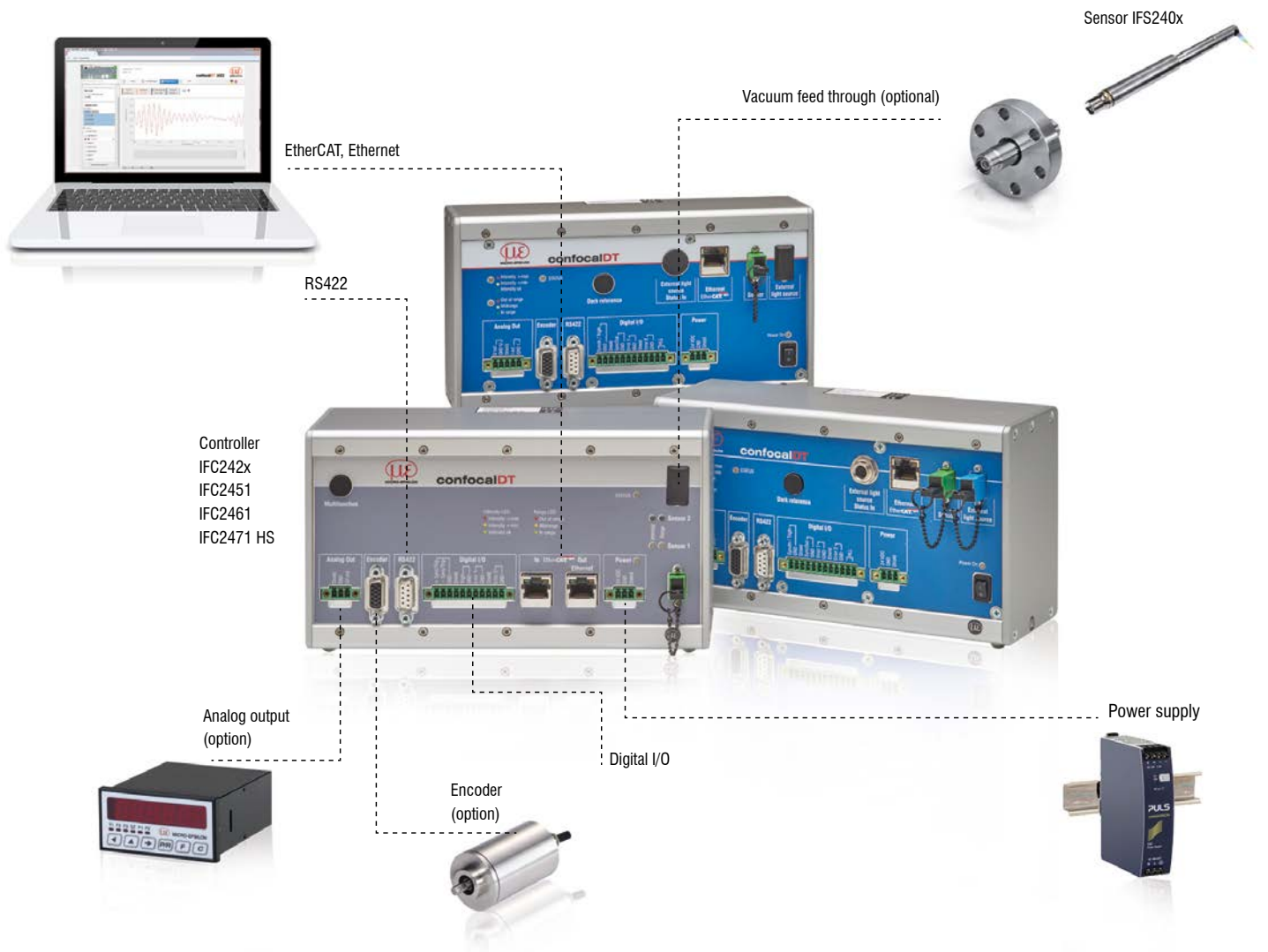
³⁾ Maximum sensor tilt angle that produces a usable signal on reflecting surfaces. The accuracy decreases when approaching the limit values.

⁴⁾ Start of measuring range measured from sensor axis.

System design

The confocalDT system consists of:

- Sensor IFS240x
- Controller IFC24xx
- Fiber optic cable C24xx



Customer-specific modifications

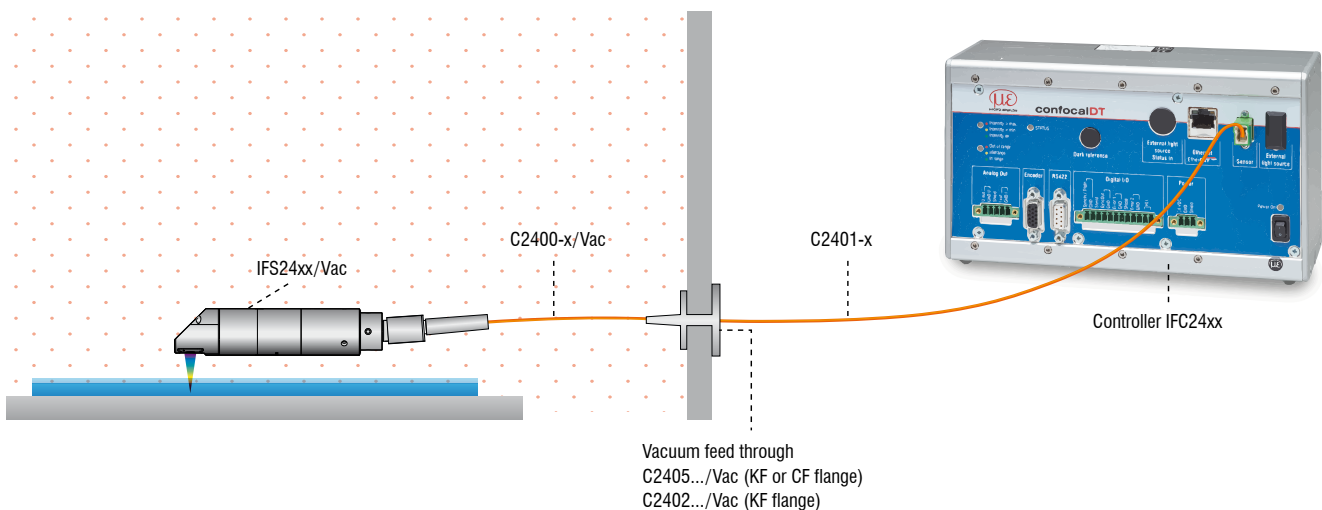
Application examples are often found where the standard versions of the sensors and the controllers are performing at their limits. To facilitate such special tasks it is possible to customize the sensor design and to adjust the controller accordingly. Common requests for modifications include changes in design, mounting options, customized cable lengths and modified measuring ranges.



Possible modifications

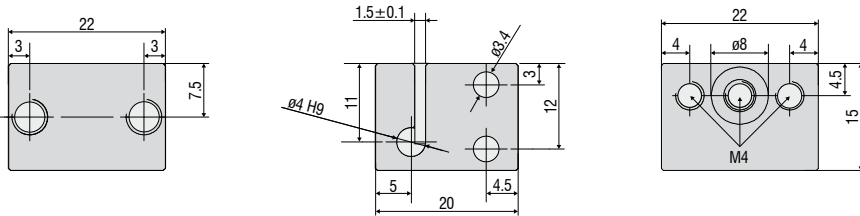
- Sensors with connector
- Cable length
- Vacuum suitability up to UHV
- Specific lengths
- Customer-specific mounting options
- Optical filter for ambient light compensation
- Housing material
- Measuring range / Offset distance

Vacuum setup



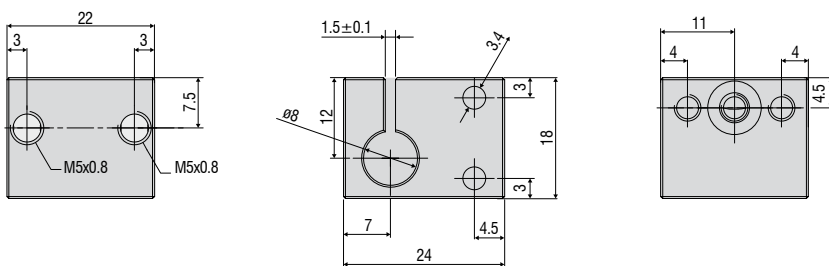
Accessories: mounting adapter

MA2402 for sensors 2402



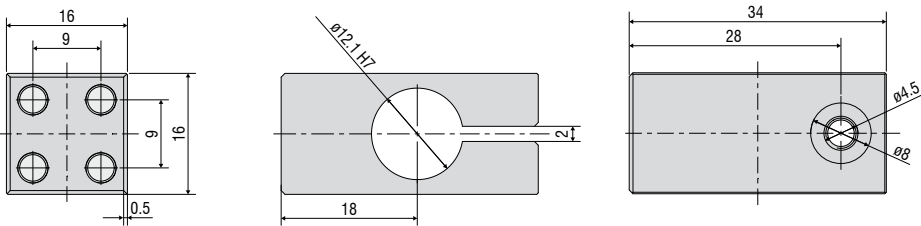
Accessories: mounting adapter

MA2403 for sensors 2403



Accessories: mounting adapter

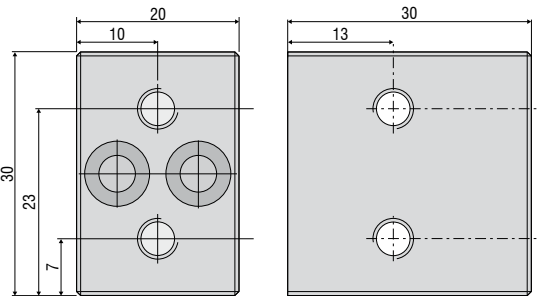
MA2404-12 for sensors IFS2404-2



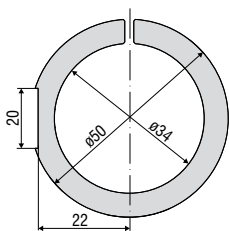
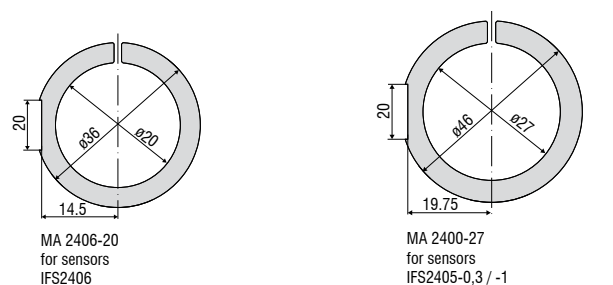
Accessories: mounting adapter

MA2400 for sensors IFS2405/IFS2406 (consisting of a mounting block and a mounting ring)

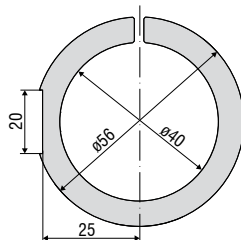
Mounting block



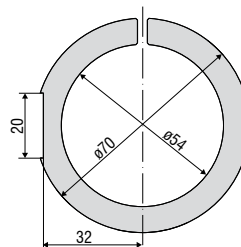
Mounting ring



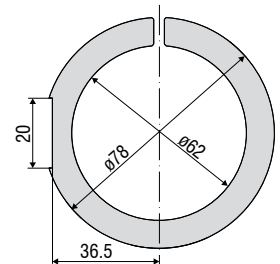
MA 2405-34
for sensors
IFS2405-3



MA 2405-40
for sensors
IFS 2405-6



MA 2405-54
for sensors
IFS2405-10



MA 2405-62
for sensors
IFS2405-28 / IFS2405-30

Accessories

Software

IFD24n1-Tool Free demo software tool included

Accessories light source

IFL2422/LE Lamp module for IFC2422
 IFL24x1/LED Lamp module for IFC24x1
 IFL2451/LED(003) Lamp module for IFC2451(003)

Cable extension for sensors

CE2402 Cable with 2x E2000/APC connectors
 CE2402-x Extension for optical fiber (3 m, 10 m, 13 m, 30 m, 50 m)
 CE2402-x/PT Extension for optical fiber with protection tube for mechanical stress (3 m, 10 m, customer-specific length up to 50 m)

Cable for IFS2404 sensors

C2404-x (01) Optical fiber core diameter 20 μm (2 m)

Cables for IFS2405/IFS2406/2407-0,1 sensors

C2401 Cable with FC/APC and E2000/APC connectors
 C2401-x Optical fiber (3 m, 5 m, 10 m, customer-specific length up to 50 m)
 C2401/PT-x Optical fiber with protection tube for mechanical stress (3 m, 5 m, 10 m, customer-specific length up to 50 m)
 C2401-x (01) Optical fiber core diameter 26 μm (3 m, 5 m, 15 m)
 C2401-x(10) Drag-chain suitable optical fiber (3 m, 5 m, 10 m)

C2400 Cable with 2x FC/APC connectors
 C2400-x Optical fiber (3 m, 5 m, 10 m, customer-specific length up to 50 m)
 C2400/PT-x Optical fiber with protection tube for mechanical stress (3 m, 5 m, 10 m, customer-specific length up to 50 m)
 C2400/PT-x-Vac Optical fiber with protection tube suitable for use in vacuum (3 m, 5 m, 10 m, customer-specific length up to 50 m)

Cable for IFS2407/90-0,3 sensors

C2407-x Optical fiber with DIN connector and E2000/APC (2 m, 5 m)

Vacuum feed through

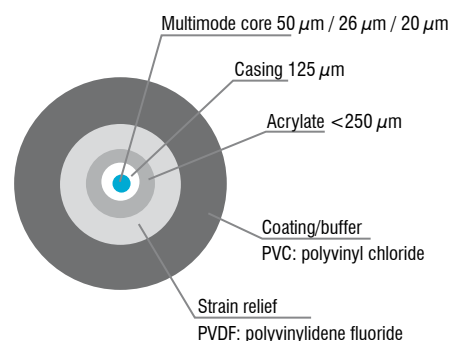
C2402/Vac/KF16 Vacuum feed through with optical fiber, 1 channel, vacuum side FC/APC non-vacuum side E2000/APC, clamping flange KF 16
 C2405/Vac/1/KF16 Vacuum feed through on both sides FC/APC socket, 1 channel, clamping flange type KF 16
 C2405/Vac/1/CF16 Vacuum feed through on both sides FC/APC socket, 1 channel, flange type CF 16
 C2405/Vac/6/CF63 Vacuum feed through FC/APC socket, 6 channels, flange type CF 63

Other accessories

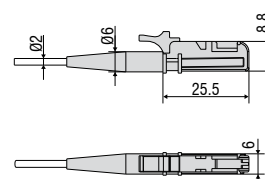
SC2471-x/USB/IND Connector cable IFC2451/61/71, 3 m, 10 m, 20 m
 SC2471-x/IF2008 Connector cable IFC2451/61/71-IF2008, 3 m, 10 m, 20 m
 PS2020 Power supply 24V / 2.5A
 EC2471-3/OE Encoder cable, 3m

Optical fiber

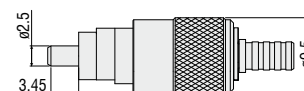
Temperature range : -50°C to 90°C
 Bending radius: 30/40 mm



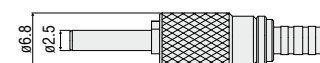
E2000/APC standard connector



FC/APC standard connector



DIN connector



Sensors and Systems from Micro-Epsilon



Sensors and systems for displacement, distance and position



Sensors and measurement devices for non-contact temperature measurement



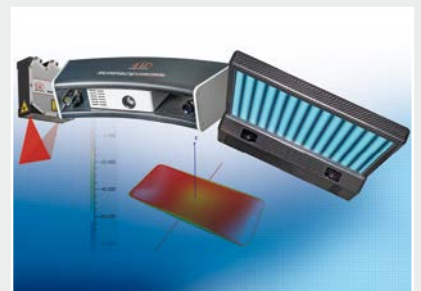
Measuring and inspection systems for metal strips, plastics and rubber



Optical micrometers and fiber optics, measuring and test amplifiers



Color recognition sensors, LED analyzers and inline color spectrometers



3D measurement technology for dimensional testing and surface inspection