

High-speed laser marking

As soon as complex logos, a lot of text or high speed play a role, the CO₂ laser marker series from Panasonic comes into play. At up to 700 characters per second, Panasonic lasers can master most production speeds. Equipped with the newly designed high-speed galvanometer and driver for very high-speed acceleration/deceleration, high-quality marking is guaranteed.



Especially in PET bottle filling machines, marking speeds must be very high. A digital encoder input can handle line speeds of up to 240 m/min. and automatically adjust the marking position to the moving target. We designed a CO₂ laser marker with PET bottles in mind whose 9.3 μ m wavelength ensures superior contrast marking.

Panasonic CO₂ Laser Markers can also manage high-contrast, high-speed marking on cardboard/carton that has been painted.

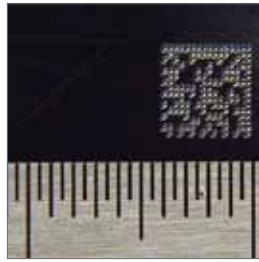
Although Panasonic FAYb Laser Markers are usually used to mark metal, CO₂ Laser Markers can mark metal surfaces that have been coated with paint, at high speed and with excellent marking results.



Glass applications



Lens



2D code on glass



Perfume bottle

Plastic applications



PET bottle



Tubing



CDs/DVDs



Plastic cap

Others



Wood



Leather



Cork

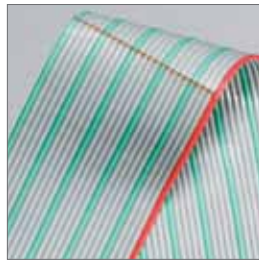


Label

Cutting applications



Perforation



Bus connector



Insulation removal

Contrast marking



Blister



Medical packaging



Chocolate packaging



Oil filter