

User friendly, entry-level touch panel



GT02L Series

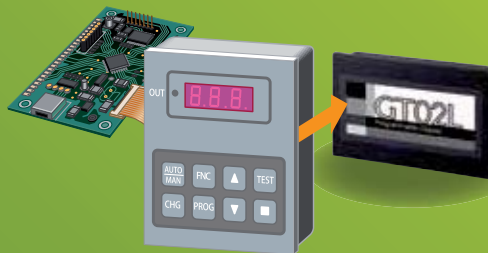
New

For replacing
your touch panel



- Compact body with a wide LCD screen that is the largest size in its class

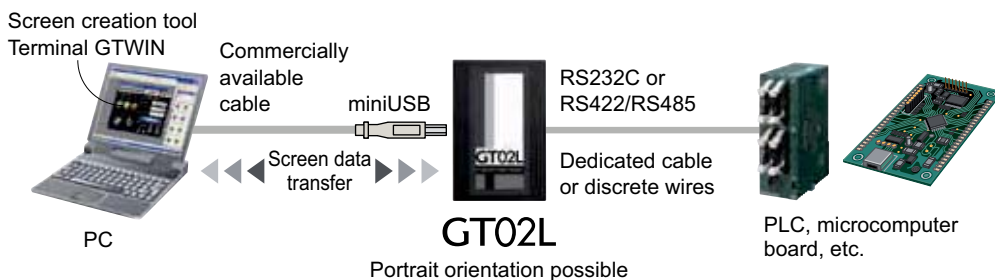
For replacement of
your membrane-type key panel



- Customizable screen and button layouts for user-friendly operations
- Easy-to-switch screens for multiple applications
- Easy data transfer via miniUSB port

GT02L-Series

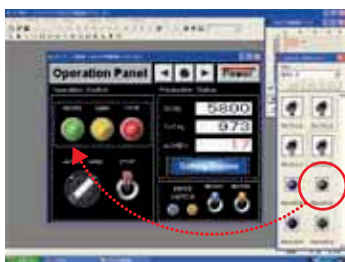
System configuration



The GT02L can be directly connected to a PLC such as our FP series or Mitsubishi Electric's FX series with a single cable for linked operations and communication, significantly reducing the number of man-hours required for wiring. There is no need to prepare a separate power supply.


Features

- You can easily design screens using dedicated software.
- Equipped with a 3.7-inch, 160 x 64-dot LCD
- Inherited the functions of the GT series such as: Security, multiple unit connection function, graph function, analog-touch system, TrueType fonts, etc.



* There are differences to the GT02 5V type with respect to the protective structure, LCD performance, and the number of registrable screens. In addition, the buzzer sound function is not available. Other functions are identical.

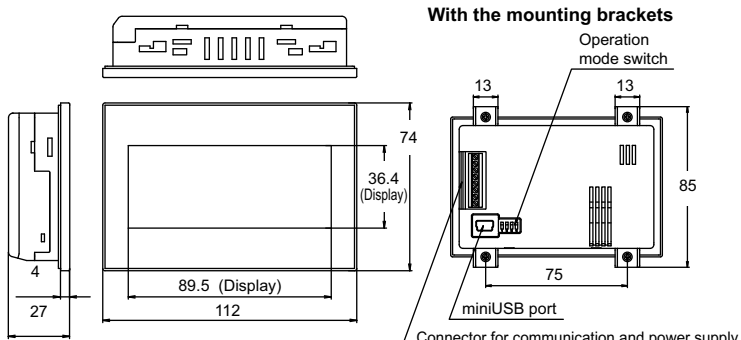
Product type

Product name	Description			Model No.
	LCD	Rated voltage	Communication port	
GT02L 	STN monochrome LCD (Backlight: white)	5V DC	RS232C	AIG02LQ02D
			RS422 (RS485)	AIG02LQ04D
Terminal GTWIN English version, V2.B0 or later	Screen creation tool CD-ROM			AIGT8001V2
PLC connection cable	For connection to our PLC, RS232C, 2 m			AIGT8142
	For connection to Mitsubishi Electric FX series, RS422/RS485, 2 m			AIGT8152
Panel face protection sheet	10 sheets in a set			AIG02800
Waterproof packing	10 sheets in a set (One sheet is installed on main unit.)			AIG02810
Mounting part	5 sets (4 parts/set, One set is installed on main unit.)			AIG12830

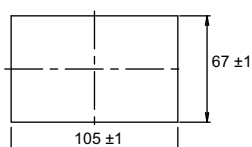
Specifications

Item	Specifications	
Rated voltage	5VDC $\pm 10\%$	
Power consumption	1W max.	
Ambient temperature	0 to +50°C	
Ambient humidity	20 to 85% RH (No condensation at +25°C)	
Environmental resistance	IP65 (in the initial stages)	
	Dust-proof and water-proof from the front of the panel only (Waterproof packing is attached to the panel contact surface.)	
Weight	150g approx.	
Display	Resolution	160 (W) x 64 (H) dots
	Displayable area	88.0 (W) x 35.2 (H) mm
	Backlight	White LED backlight
	Touch switch	Analog resistance film type
	Number of screens	Up to 80 screens

Dimensions (Unit: mm)



Panel cutout dimensions



Applicable panel thickness: 1.0 to 5.0 mm