

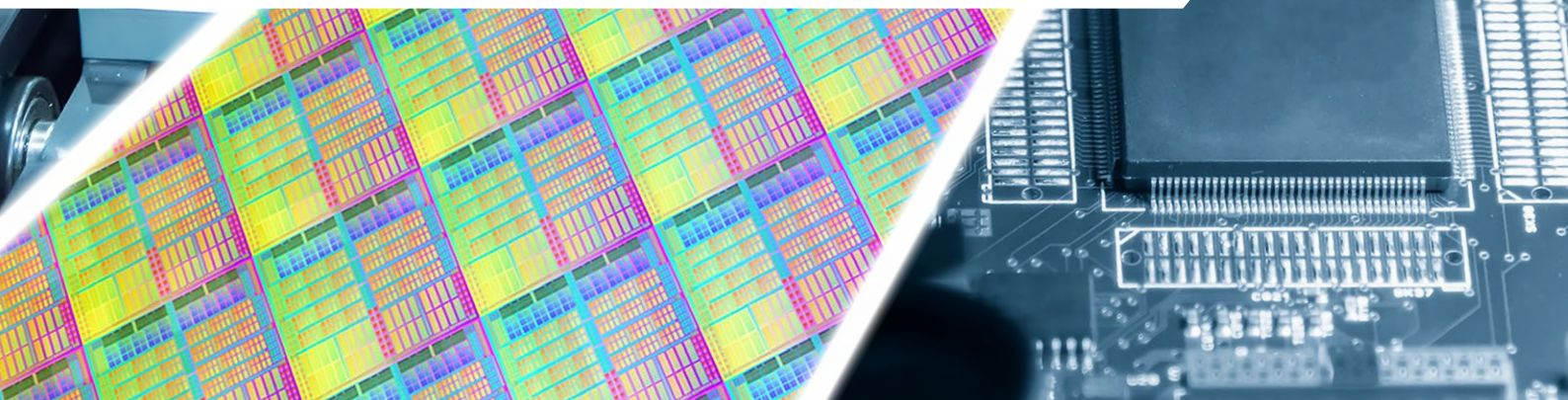


**PRECITEC**



# **INTERFEROMETRIC SENSORS**

See your smart factory run more efficiently  
with our high-end optical sensors





# THE EYES OF SMART INDUSTRY

What does industry need to meet the fast-moving demands of smart manufacturing? On the one hand, automated manufacturing processes; on the other hand, individual machines that are transformed into intelligent cyber systems by integrating smart sensors. In all these processes optical measuring technology offers many advantages, not least data volume, speed, and flexibility for status and process monitoring applications as well as high-end quality control in the required cycle times.

## INTERFEROMETRY SEES MORE

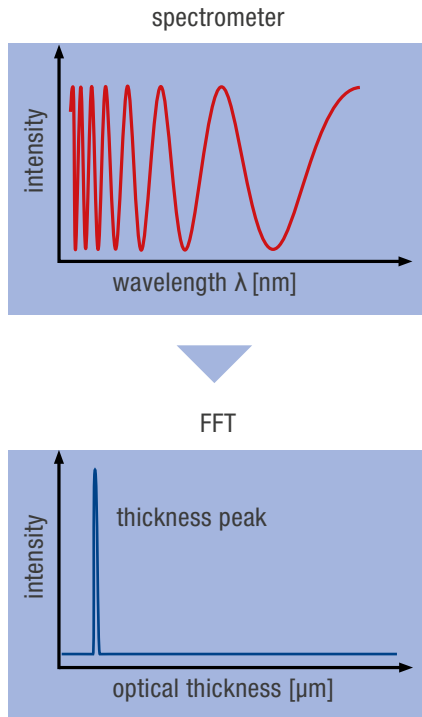
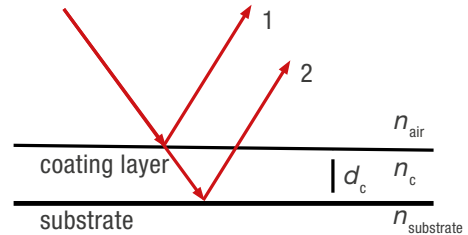
In precision metrology interferometry can be used for high-precision measurements of distance or displacement of up to 20 mm, and for microstructure measurements with sub-micrometer resolution. Interferometry is also suitable for quality assurance-, surface- and thickness-, and speed-measurements. As one of the fundamental building blocks of today's smart factories, intelligent sensors are key enablers for production resources that configure, control, manage and optimize themselves. As reliable ultra-precise sensor data are crucial for production environments, interferometric sensors serve as pairs of eyes for smart production machines in state-of-the-art factories.



## HOW THESE EYES WORK

After spectrally broadband light is focused on a sample, the reflections from the front and back surface are collected. Interferometric sensors measure the interference between two or more reflected beams from the first and second layer of the measuring sample, which results in a spectrum.

This spectrum displays a modulation with a frequency linked to the thickness of the sample: the thinner the object, the lower the observed frequency. Calculating the Fourier transformation of the spectrum leads to one peak that instantly shows the optical thickness. If the refractive index of the object is known, the absolute layer thickness can be calculated. This technique is also ideally suited to multilayer thickness measurements.



Interferometric measuring technology from Precitec Optronik, the pioneering force in interferometry, offers you multiple advantages:

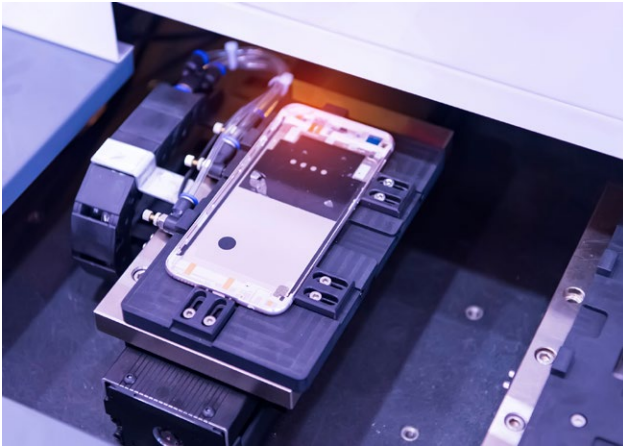
- ▶ Ultra-precise thickness measurements from 0.6 - 15,000  $\mu\text{m}$
- ▶ Measurement of all infrared-transparent materials with rough, reflective, transparent or opaque surfaces
- ▶ Sensor technology suitable for harsh industrial environments, even for measurements in liquids such as water, oil or acids
- ▶ Insensitive to heat, humidity or vibration
- ▶ Ideal for high speed inline inspections up to 70 kHz

### HOW YOU BENEFIT

- ▶ Utmost precision for infrared transparent materials in the  $\mu\text{m}$  range
- ▶ High-speed real-time processing and analysis for quality control in short cycle times
- ▶ Wear-free durability thanks to non-contact technology
- ▶ Easy integration into production processes
- ▶ Small, compact footprint for use in highly integrated systems or difficult-to-access areas

# THE EXPERTISE TO ADVANCE YOUR BUSINESS

The expertise and experience Precitec Optronik has gained in interferometric technology enable us to enhance our customers' production processes and make them more competitive in a wide range of industrial applications.

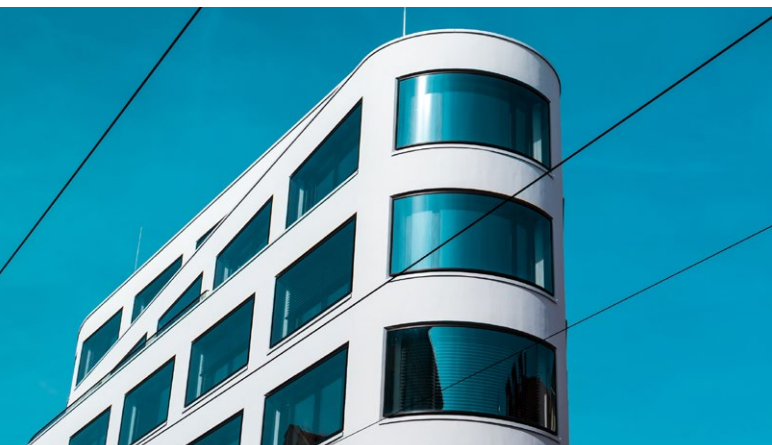
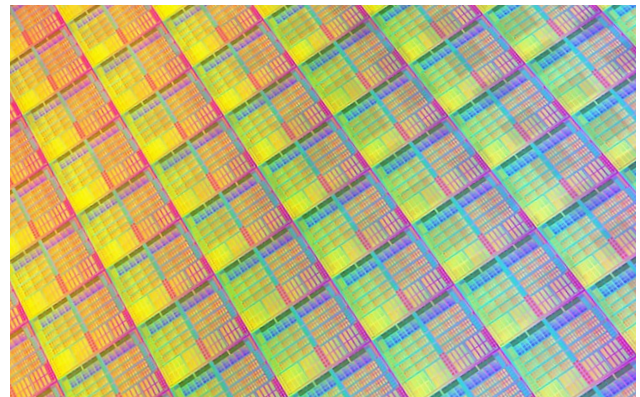


## CONSUMER ELECTRONICS

Our interferometric probes enable rigorous quality tests on consumer electronic products (e.g. smartphones, tablets and wearables) for maximal yield through fast, non-contact measurements at unparalleled precision and reliability. Applications include highly accurate inline inspection of the flatness and thickness of components, e.g. cover glasses. Measurements are possible from a large distance, and parts may be moving or covered with protective films. Through ultrafast interferometric scanning of the areas of interest at lateral speeds up to 300 mm/s and the absolute correlation of the data obtained, our sensors make complex inline inspections straightforward.

## SEMICONDUCTORS

For more than a decade, our CHRocodile IT series has proven its capabilities in non-destructive optical measurements as the favored technique for thickness measurements of wafers, glues, and coatings. These reliable high-speed tools detect end point thicknesses in-situ during workpiece treatment in CMP, back grinding and spin etching. Consistent end-point detection generates a higher throughput coupled with a more accurate and repeatable product quality. Additionally, optical monitoring makes the process much more efficient, which reduces material waste.



## GLASS

To control the surfaces and especially the thickness of glass during production, a contact-free measuring system is needed. For many applications in the glass industry, e.g. architecture glass, the panels can be quite thick, have multiple layers, and also be highly tinted. The only possible solution for contact-free thickness measurement is an interferometric sensor. With its large measuring ranges our CHRocodile 2 IT series can measure distances and thicknesses of 0.6 - 15,000  $\mu\text{m}$ , and with measuring rates of up to 70 kHz can quickly measure large areas. What's more, the measurements are highly accurate with lateral resolutions in the  $\mu\text{m}$ -range, thus enabling resolution of even small structures.





## MEDICINE

The CHRcodile 2 IT is perfectly suitable for glass tube measurements, e.g. during syringe manufacturing. Thanks to the high measuring range and interferometry selectivity it is impossible to miss the top of the tube. The same is true for plastic tubes – and even more so if the tube is translucent, not transparent. Medical solution bags can also be easily inspected in a lab or on a production line. Around the coronary stents the CHRcodile 2 IT will measure the thickness of the film envelopes or any coatings. Biocompatible or biostable coatings that are often applied to medical devices can also be precisely measured to check if sufficient material has been applied.

## AUTOMOTIVE GLASS

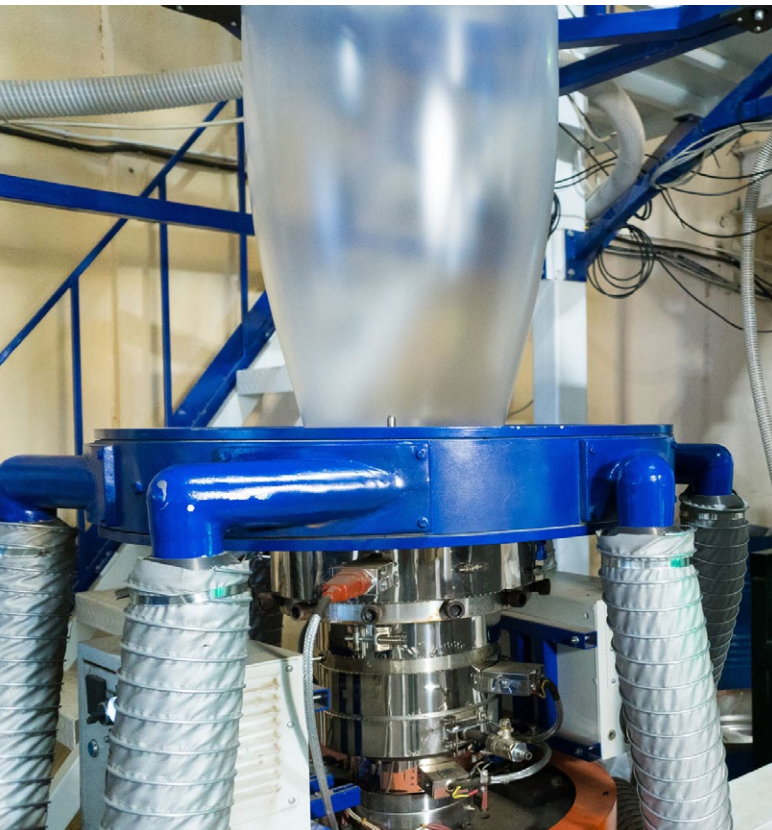
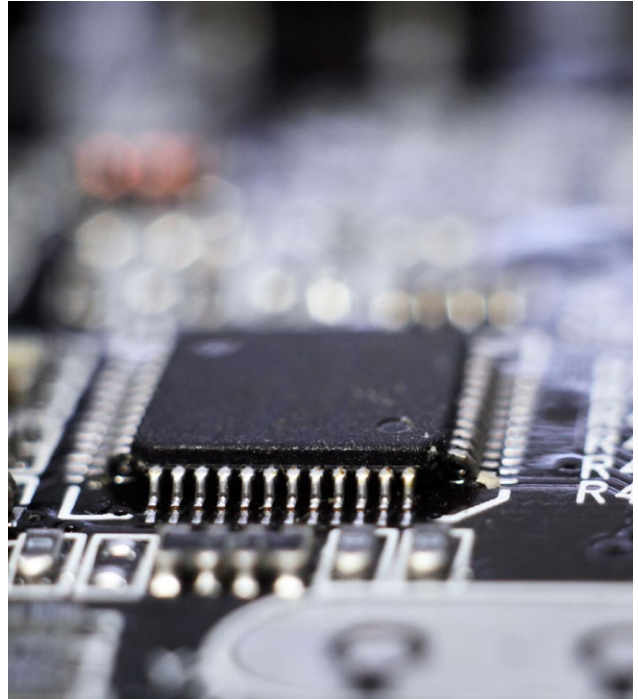
Highly popular technologies such as head-up displays have increased the need for accurately shaped high-quality windshields. The lightweighting trend is another reason for the necessity of quality control, as thinner multi-layer glasses still have to fulfill all safety requirements. Typical state-of-the-art windshields contain a plastic foil between two layers of glass.

As our interferometric sensors are capable of resolving all the desired curvatures and thicknesses of all the above-mentioned layers, this technology is superior to tactile sensors. Thanks to the large measuring range and excellent axial resolution our CHRcodile IT products measure thick and highly tinted glasses with excellent precision and without touching any surface.



## AUTOMOTIVE COATINGS

Thickness inspection of a conformal coating – created by spraying a dielectric material onto a device component to protect it from moisture, dust, corrosion and other environmental stresses – is necessary to guarantee 100% protection. As these coatings are so thin, our interferometric technology is used to measure their thickness. Our CHRcodile IT products ensure rapid throughput, minimum cycle times and high product volumes in high-precision applications.



## PLASTICS

Our dedicated interferometric sensors deliver the thickness and topography values required for various types of plastic foils, containers and PET bottles. This flexibility is very handy, especially during foil production, as different machine parameters can be adjusted instantaneously based on the sensor's values. The infrared light source enables the thickness of different kinds of even optically non-transparent or completely opaque plastics to be measured.

# PIONEERS IN INTERFEROMETRY – WHY PRECITEC OPTRONIK STANDS OUT

As an innovation-driven sensor technology specialist for industrial and scientific applications, Precitec Optronik has been developing and manufacturing interferometric sensors for decades. With around 12% of our total turnover spent on research and development (R&D) we employ 25 - 30 R&D specialists in an overall workforce of around 100. Through listening closely to what our customers tell us, we can apply our R&D expertise to develop products that meet their precise needs. And by reacting quickly to our customers' needs, we can apply our R&D expertise to develop products of great interest to several industries. Our experience in the field of interferometry has resulted in developments such as the Area Scan Probe (Flying Spot Scanner), a pioneering point-of-interest area probe featuring a technology that is unmatched in the sensor industry.

## UNPARALLELED PRODUCT PORTFOLIO

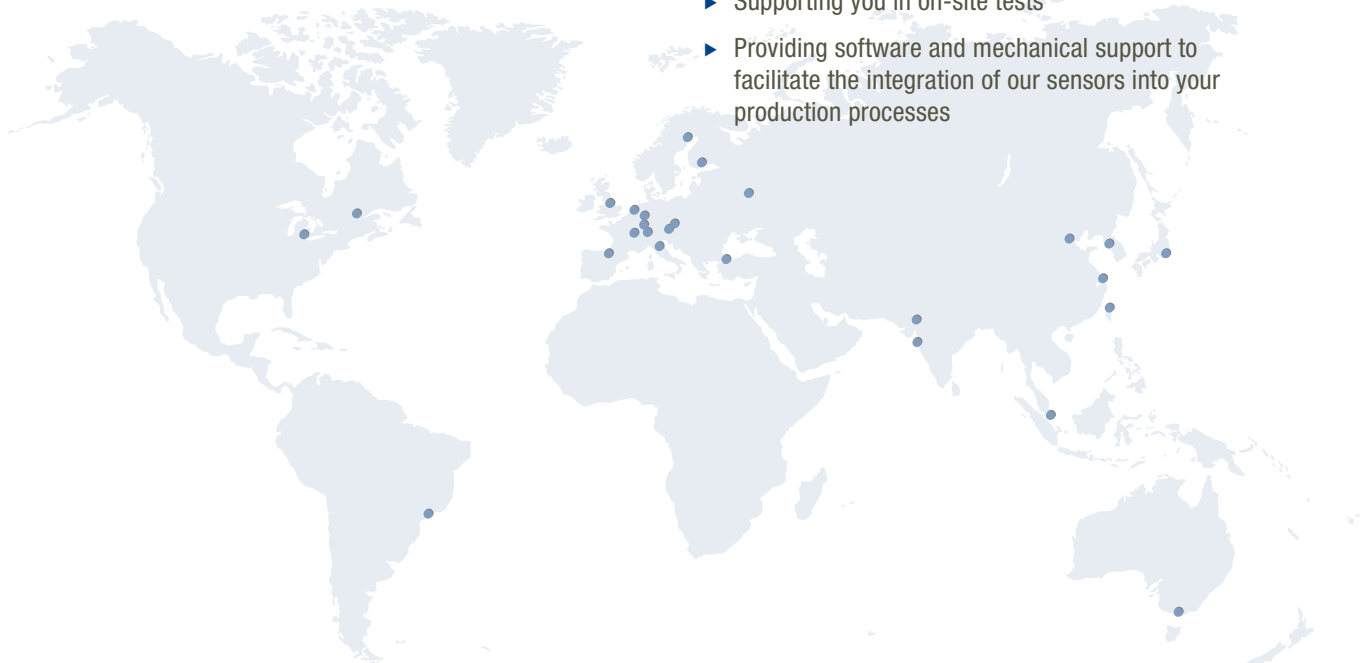
To meet your needs in high-precision interferometric sensor technology, we offer:

- ▶ Point inspection
- ▶ Area inspection with a scanning diameter of up to 80 mm
- ▶ Probes for special applications, e.g. acid-proof, water-proof or compact spacers
- ▶ OEM supplier

## STANDARD-SETTING CUSTOMER SUPPORT

We are not just in the business of selling interferometric measuring equipment. Our goal is to sustainably support your business through the entire lifecycle of our products. That is why we strongly invest in standard-setting customer support via a global sales and service team made up of highly qualified and experienced engineers. For us, 360° customer service and support means:

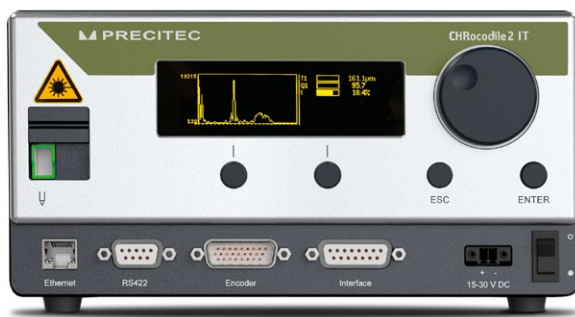
- ▶ Finding solutions for your measuring task through dedicated R&D
- ▶ Running test measurements on your samples in five application labs worldwide
- ▶ Supporting you in on-site tests
- ▶ Providing software and mechanical support to facilitate the integration of our sensors into your production processes



# CHROCODILE IT POINT SENSORS – UTMOST PRECISION, HIGH FLEXIBILITY

Precitec Optronik has used its decades of experience to develop a large variety of interferometric controllers and probes with a broad spectrum of infrared light sources. Their flexibility makes them suitable for a wide range of non-destructive measurement applications – from thin to thick materials and small to large measuring areas.

The thickness of coated or layered materials is measured from one side in a measuring range of 0.6 - 15,000 µm and a working distance tolerance of almost 100 mm. Their high measuring speed makes these devices perfectly suitable for inline applications, while an integrated pilot laser greatly simplifies the alignment process of the sensor with respect to the measuring sample.



## HOW YOU BENEFIT

- ▶ **Efficiency:** Cost- and time-efficient, precise, rapid, non-contact measurements
- ▶ **Universal:** Measures distance and thickness on all surfaces inline and offline with high lateral resolution
- ▶ **User-friendly and safe:** Robust and simple to integrate into production lines for non-destructive measurement
- ▶ **Automatic light control and pilot laser**

## PRODUCT OVERVIEW

	CHROcodile 2 IT	CHROcodile 2 IT RW	CHROcodile 2 IT DW
Measuring range	CHR 2 IT 500: 38 µm - 4300 µm CHR 2 IT 1000: 64 µm - 7500 µm CHR 2 IT 1300: 87 µm - 10000 µm CHR 2 IT 1700: 114 µm - 12600 µm	CHR 2 IT RW 500: 44 µm - 4900 µm CHR 2 IT RW 1000: 57 µm - 6400 µm	CHR 2 IT DW 250: 15 µm - 1800 µm CHR 2 IT DW 500: 29 µm - 3000 µm CHR 2 IT DW 1000: 66 µm - 7600 µm
Measuring rate	up to 70 kHz	up to 70 kHz	up to 70 kHz
Main application	wafers, (semi-)transparent plastics	rough wafers, nearly opaque plastics	doped & highly doped wafers, measurements in liquids

	CHROcodile 2 IT HDW	CHROcodile 2 IT HTW	CHROcodile 2 IT LR	CHROcodile 2 K
Measuring range	CHR 2 IT HDW 250: 15 µm - 1800 µm CHR 2 IT HDW 500: 29 µm - 3000 µm	4 µm - 200 µm	16 µm - 2200 µm	up to 1500 µm
Measuring rate	up to 4 kHz	up to 4 kHz	up to 70 kHz	up to 4 kHz
Main application	doped & highly doped wafers, measurements in liquids	thin wafers, thin foils, coatings, adhesives	high lateral resolution/ small spot size, roughness measuring	plastics / plastic foils



# OPTICAL PROBES THAT SIMPLY SEE FURTHER



## FLYING SPOT SCANNER

Precitec Optronik's latest optical probe, the Flying Spot Scanner (FSS), enables high-speed OCT imaging for thickness and topography combinable with all CHRcodile 2 IT sensors. The FSS features pioneering one-of-its-kind technology enabling high-speed non-contact area inspection for inline and offline quality assurance and 3D measurements on a wide range of materials and surfaces.

Point-of-interest (POI) inspections have never been simpler thanks to freely definable scan shapes and filters. The integrated software enables you to set up your application easily. You simply define your own measurement procedure by creating a list of areas of interest. The CHRcodile 2 IT sensor stores the customized procedure and automatically controls the probe, while the software visualizes the results and the statistics.

### HOW YOU BENEFIT

- ▶ High-speed in motion inspection for inline and offline quality control
- ▶ Freely definable scan shapes and filters
- ▶ Telecentric imaging for best results on all surfaces
- ▶ Replacement of x,y motion stages

## INTERFEROMETRIC OPTICAL PROBES

Our expertise in the field of optics has enabled us to develop high-precision optical probes that deliver excellent performance for interferometric distance and thickness measurements.

Thanks to the very small spot size we reach lateral resolutions down to a few  $\mu\text{m}$ , which allows even small and complex structures to be accurately measured.

The small dimensions of the interferometric probes and the possibility to choose between working distances of 40 mm and 100 mm ensure the probes are easy to integrate, even in production environments with tight spatial requirements. Both optical probes are, of course, compatible with all interferometric CHRcodile sensors.



# CHROCODILE 2 SENSOR – THE EYES THAT SEE MORE

Our white-light interferometry takes you beyond the limits of confocal chromatic technology to measure the thickness of thin, transparent layers, e.g. coating, varnish, silicone or transparent films in the 2 - 180 µm range. Another unique feature of these white-light interferometric sensors is that users can switch from one scanning technology to another – a standard feature at Precitec but not available in competitors' products.

## CHROCODILE 2 S/2 SE

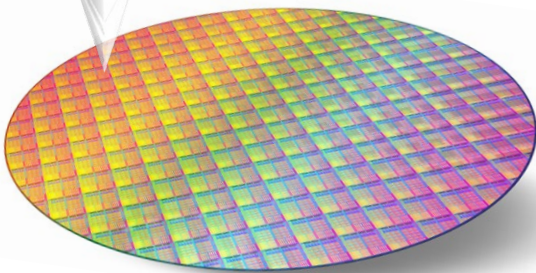
### HOW YOU BENEFIT

- ▶ The allround sensor for non-contact distance and thickness measurements
- ▶ High speed at up to 66,000 measurements per second
- ▶ Simple to integrate into product lines, maintenance-free and robust
- ▶ CHRcodile 2 SE option designed for use of high-intensity external light sources for high-speed measurements

## CHROCODILE 2 S HS

### HOW YOU BENEFIT

- ▶ Designed for a maximum signal-to-noise ratio
- ▶ Extraordinarily high dynamic response at up to 4,000 measurements per second
- ▶ Specially designed for measuring surfaces with differing reflectivity and high incident angles
- ▶ Simple to integrate into product lines, maintenance-free and robust



# WHERE YOU CAN PROFIT FROM OUR KNOW-HOW

In a wide variety of industries our interferometric products are giving customers clear competitive advantages and making a decisive difference in the industries listed below. If your industry features here, get in touch with us to find out how we can help to enhance your efficiency and make you more competitive.

▶ CONSUMER ELECTRONICS

▶ SEMICONDUCTOR INDUSTRY

▶ GLASS INDUSTRY

▶ COORDINATE MEASURING MACHINES (CMM)

▶ PLASTIC AND RUBBER PROCESSING

▶ MEDICINE

▶ AUTOMOTIVE

▶ MACHINE TOOLS

▶ PHOTOVOLTAICS

▶ FINE MECHANICS

▶ TOOL MANUFACTURING

▶ AEROSPACE



**EUROPE**

GERMANY /  
HEADQUARTER

**Precitec Optronik GmbH**  
Schleussnerstraße 54  
63263 Neu-Isenburg  
Phone: +49 (0)6102 3676 100  
Fax: +49 (0)6102 3676 126  
info@precitec-optronik.de  
www.precitec-optronik.com

FRANCE

**Precitec France Sarl**  
Les Carrés du Cengle Bât E  
Chemin de la Muscatelle  
13790 Châteauneuf-le-Rouge  
Phone: +33 (0)442 502 303  
contact@precitec.fr  
www.precitec.fr

ISRAEL

**KBZ Technologies LTD**  
4 Imanuel Kozidalo st.  
49387 Petach Tikva  
Phone: +972 (0)54 2644 015  
kobi@kbztechnologies.com  
www.kbztechnologies.com

ITALY

**Precitec Vision GmbH & Co. KG**  
Rotfarb 3  
8413 Neftenbach  
Phone: +41 (0)52 5441 200  
Fax: +41 (0)52 5441 209  
Italy@precitec.de  
www.precitec.ch

**A.B. Esse spa**  
**Service Partner / End Customer**  
Via Larga, 15/8  
40138 Bologna  
Phone: + 39 (0)51 515508  
Fax: + 39 (0)51 4202473  
info@abesse.com  
www.abesse.com

UNITED KINGDOM /  
IRELAND

**Armstrong Optical Ltd**  
31 Caxton House Northampton  
Science Park, Kings Park Rd  
NN6 3LG Northampton  
Phone: +44 (0)1604 654220  
Fax: +44 (0)1604 654221  
iar@armstrongoptical.co.uk  
www.armstrongoptical.co.uk

SWITZERLAND

**Precitec France Sarl**  
Les Carrés du Cengle Bât E  
Chemin de la Muscatelle  
13790 Châteauneuf-le-Rouge  
Phone: +33 (0)442 502 303  
contact@precitec.fr  
www.precitec.fr

CZECH REPUBLIC

**Safibra s.r.o.**  
Cernokostelecka 1621  
251 01 Ricany  
Phone: +420 323 601615  
Fax: +420 323 606007  
ladislav.sasek@safibra.cz  
www.safibra.cz

**ASIA**

CHINA

**Precitec Laser Technologies (Shanghai) Co., Ltd.**  
No.558 Chuantu Road, Building No.6  
Chuansha Town, Pudong New Area  
201202 Shanghai  
Phone: +86 21 64955366  
Fax: +86 21 50718558  
CHR\_sales@precitec.cn  
www.precitec.de/cn

JAPAN

**Precitec Japan Ltd.**  
5-1-11 Osaki, Shinagawa-ku  
141-0032 Tokio  
Phone: +81 (3) 6420 3955  
Fax: +81 (3) 6420 3977  
precitec@precitec.de  
www.precitec.de/jp/

SOUTH KOREA

**Precitec Korea**  
#703, Mapo Tower 41  
Mapo-daero 4da-gil  
Mapo-dong, Mapo-gu  
04177 Seoul  
Phone: +82 (0)2 711 2275  
Fax: +82 (0)2 711 2276  
k.kim@precitec.co.kr  
www.precitec.co.kr

**SANTEC**

#M-1001, Songdotechnopark IT  
Center,  
32, Songdogwahak-ro, Yeonsu-gu  
21984 Incheon  
Phone: + 82 (0)32 812 1162  
Fax: +82 (0)32 209 8066  
trade@santec.co.kr  
www.santec.co.kr

TAIWAN

**Precitec Asia Ltd.**  
**SHOWROOM**  
11F.-2, No.79, Sec. 2, Shuangshi Rd.  
Bangjiao Dist.  
New Taipei City 220, Taiwan (R.O.C.)  
Phone: + 886 2 22542503  
a.lin@precitec.tw  
www.precitec.com

**AMERICA**

USA

**Precitec Inc.**  
28043 Center Oaks Ct.  
Wixom, MI 48393  
Phone: +1 (248) 446 8100  
Fax: +1 (248) 446 9409  
sales@precitec.com  
www.precitec.com

CANADA

**Precitec Inc.**  
28043 Center Oaks Ct.  
Wixom, MI 48393  
Phone: +1 (248) 446 8100  
Fax: +1 (248) 446 9409  
sales@precitec.com  
www.precitec.com

**Hoskin Scientifique Limitée**  
300 Stinson  
QC, CANADA H4N 2E7 Saint-Laurent  
Phone: +1 (514) 735-5267  
Fax: +1 (514) 735-3454  
glabrie@hoskin.ca  
www.hoskin.qc.ca