

CARLO GAVAZZI
Automation Components

80 
CARLO GAVAZZI
1931-2011



Building Automation

Solutions for
Lifts and Escalators

Lifts & Escalators

Solutions for



Electric lift

Hydraulic lift

Home lift

Escalator

Goods lift

ABOUT CARLO GAVAZZI

Carlo Gavazzi Automation is a multinational electronics group active in the design, manufacture and marketing of electronic equipment targeted at the global markets of industrial and building automation.

Our history is full of firsts and our products are installed in a huge number of applications all over the world. With 80 years of successful operation, our experience is unparalleled.

We have our headquarters in Europe and numerous offices around the world.

Our R&D competence centres and production sites are located in Denmark, Italy, Lithuania, Malta and the People's Republic of China.

We operate worldwide through 21 of our own sales companies and also selected representatives in more than 65 countries, from the United States in the West to the Pacific Rim in the East.

Our core competence in automation spans four product lines: Sense, Switch, Control, Fieldbus and EcoEnergy equipment.

Our wide array of products includes sensors, monitoring relays, timers, solid-state relays, electronic motor controllers, energy management

equipment, fieldbus systems and components for renewable energy. We focus our expertise on offering state-of-the-art product solutions in selected market segments.

Our customers include original equipment manufacturers of packaging machines, plastic-injection moulding machines, food and beverage production machines, conveying and materials handling equipment, door and entrance control systems, lifts and escalators, as well as heating, ventilation and air-conditioning devices.



DESIGNED TO MEET MARKET REQUIREMENTS

Carlo Gavazzi, thanks to its 30 years of expertise in providing components for Lift and Escalator equipment, is able to offer innovative and reliable solutions so as to maximize comfort and reduce operational costs.

Lifts and Escalators includes three main segments: new equipment, modernization and maintenance.

Market trends show that Asia will be a key source of demand for "new" elevators in the coming years, thanks to the very active construction market and the trend to concentrate people in high-rise buildings, while in Europe and North America, sales of maintenance and upgrading services are expected to

grow at higher rates than new equipment sales, supported by an expanding installation base, safety requirements and the ageing of current installations.

Lift door closing is now safer thanks to the new Carlo Gavazzi BFL series of light curtains. Providing door re-open signals by detecting people-movement in the entrance area, the BFL ensures effective protection for people and objects during lift access.

With an increased number of beams and a higher degree of protection, this is the ideal solution for customers having special space requirements.

Designed according to the EN81-70 (Safety Rules for the Construction and Installation of Lifts), the installation of the BFL series in new and existing plants can

fulfill the European Safety Standards.

Fast and cost-effective installation, diagnostic LEDs, reliability, high immunity to light even if reflected from shiny objects, mean less downtime for elevator door operations.

Carlo Gavazzi magnetic proximity sensors are used in the Lifts and Escalators market for many applications, such as cabin levelling, speed monitoring and cabin presence detection.

Accuracy and speed, combined with availability of various output functions, ensure the best signal for economical high speed elevator control.

Moreover, our range includes several accessories so as to provide customers with powerful and user-friendly solutions.

Lifts & Escalators

Electric lift



Proximity magnetic sensors	Photoelectric sensors	Light curtains for lift	Monitoring relays	Dupline	Timers	Energy meters	Power supplies
SPB2 FMP	PE12 PD70 PA18	BFL	DPA51 DPA53 DTA01	G349600..700 G219600..700 G21404421700	DAA51 DMB51	EM21 EM23	SPD

Lifts of this type make any number of trips per day, from a few to hundreds. So their components have to guarantee maximum reliability, accuracy and robustness. Carlo Gavazzi offers a wide range of components to make sure these requirements are met: from the top-selling SPB2 and FMP series of magnetic



switches to detect the presence of the cabin at various depths in the shaft, to the DPA51, designed to detect any phase sequence or loss failure in the system. The cabin door can be equipped with the PE12 or PD70 photo sensors or, when full door coverage is required, with the BFL light curtain, available in two shapes with up to 194 beams. Other user-friendly solutions, like NC/NO programmable output and automatic blanking, make installation easy and extend the lift's service life. The PS limit switch series ensures reliable detection of the cabin position. We also offer a range of panel products: these include the DPA53 to detect very low power supply voltage to avoid the cabin stopping in mid-shaft, the 24VDC

switching power supplies (used increasingly in lift electrical panels), the DTA01/DTA02 PTC relays to detect overheating in the lift engine, the FSA hour meter to correlate preventive maintenance to actual usage of the lift, and our well-known DAA51 and DMB51 timers and RMI relays. A special role is reserved for energy meters, used increasingly to ensure the lift complies with LEED requirements or other energy-saving policies and legislation. Our EM21 and EM23 counters or CPT transducer (when no visualization is required) are excellent cost-effective solutions when panel space is limited. Finally, the RAD01 and RAD02 microwave radars keep the lift door open while there are people outside (i.e. in hospitals).

Hydraulic lift



Proximity magnetic sensors	Photoelectric sensors	Light curtains for lift	Safety modules	Counters	Monitoring relays	Industrial relays	Soft starters
SPB2 FMP	PE12 PD70 PA18	BFL	NA12DLIFT	FSA	DTA01	RMI	RSHR RSDR

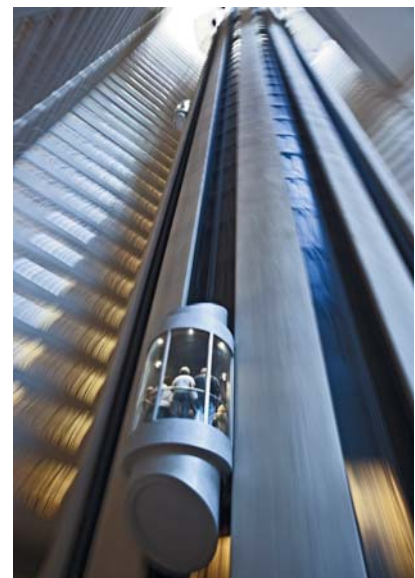
A hydraulic elevator system lifts a car using a hydraulic ram, a fluid driven piston mounted inside the cylinder. The cylinder is connected to a fluid-pumping system that controls the movement of the elevator. Fluid from the tank is forced into a pipe leading to the cylinder so that as fluid collects within the cylinder, it pushes the piston up, thus lifting the elevator car.

On Hydraulic Lifts it is particularly important to safely regulate cabin / floor levelling. If the cabin is not at the same level as the floor, when the door opens, this could be dangerous for passengers.

In order to avoid any kind of accident, Carlo Gavazzi's solution is to control cabin levelling by means of a Safety contact, according to the norms included in the Lifts and Machinery Directives.

Our solution consists of two mono-stable magnetic sensors mounted on the cabin and connected to a safety module, allowing the safety control system to effectively operate the level adjustment.

Moreover, two additional mono-stable magnetic sensors give an indication of the correct levelling to the control system.



Lifts & Escalators

Home lift



Proximity magnetic sensors

SPB2
FMP

Photoelectric sensors

PE12

Light curtains for lift

BFL

Radar sensors

RAD01
RAD02

Safety modules

NA12DLIFT
NLG13

Timers

DAA51
DMB51

Industrial relays

RMI

Soft starters

RSHR

This special kind of lift usually does not have a cabin door; therefore the user is exposed to the risk of damage by accidentally banging against the wall. Until now, the start button has had to be held pressed for the whole duration of the lift's run; the advantage was that the user could not move while the lift was running, avoiding any risk.

The "universal automatic operation" allows the button to be pressed only once and then it can be released, just like a standard lift. Since the user is now free to move, another protection must be added on every entrance to the cabin. This is achieved by the use of safety sensors and a safety module. Two pairs of BFL Light curtains are mounted on the cabin

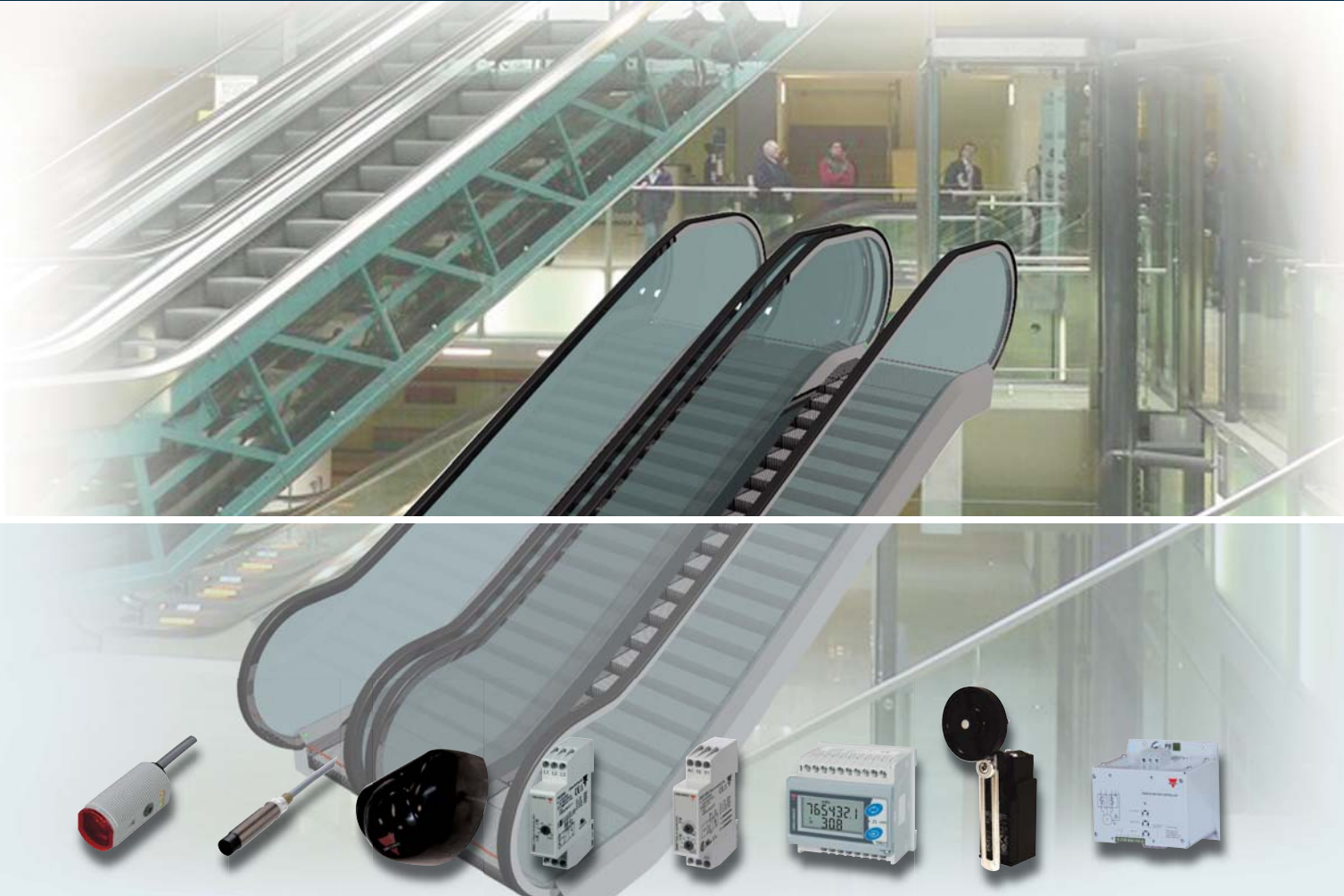
entrance. The safety module receives the signal from the BFLs if any beam is interrupted and makes the lift stop in the case of a dangerous situation. The platform can move again only when any obstacle between the barriers is removed and the module receives a new start command. Carlo Gavazzi offers a kit



including 2 pairs of light curtains and the safety module - certified according to the norm EN81-41, for redundant protection. This kit has been designed to prevent any entry of the user in dangerous areas during the operation of the lift and it is the ideal solution for elevator platforms without doors.



Escalator



Photoelectric sensors	Inductive sensors	Radar sensors	Monitoring relays	Timers	Energy meters	Limit switches	Soft starters
PA18 PE12	ICB12	RAD01 RAD02	DPA51 DPA53 DTA01	DAA51 DMB51	EM21	PS	RSDR RSHR

Carlo Gavazzi considers the full range of indoor and outdoor application needs when designing and manufacturing products for the escalator market.

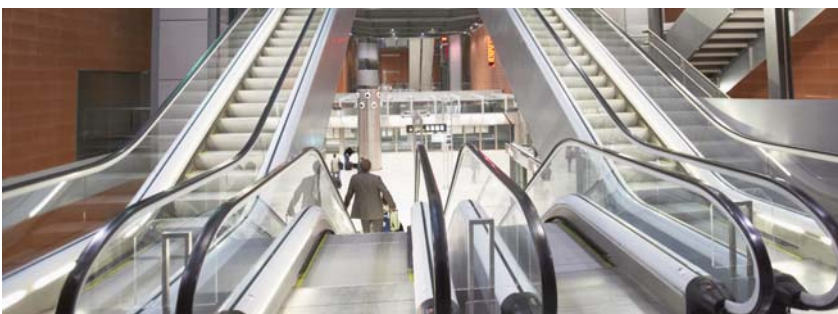
Its range includes inductive proximity sensors to ascertain the speed, position and direction of the

escalator, as well as photoelectric sensors to detect commuters using the state-of-the-art intelligent escalator and switch from standby mode to normal mode (dual-speed mode). For single ECO-speed escalators, Carlo Gavazzi also offers a wide selection of soft-starter motors to handle

capacities up to 1050 KW. Furthermore, in line with the global attention to energy conservation issues, energy meters are available to monitor energy efficiency.

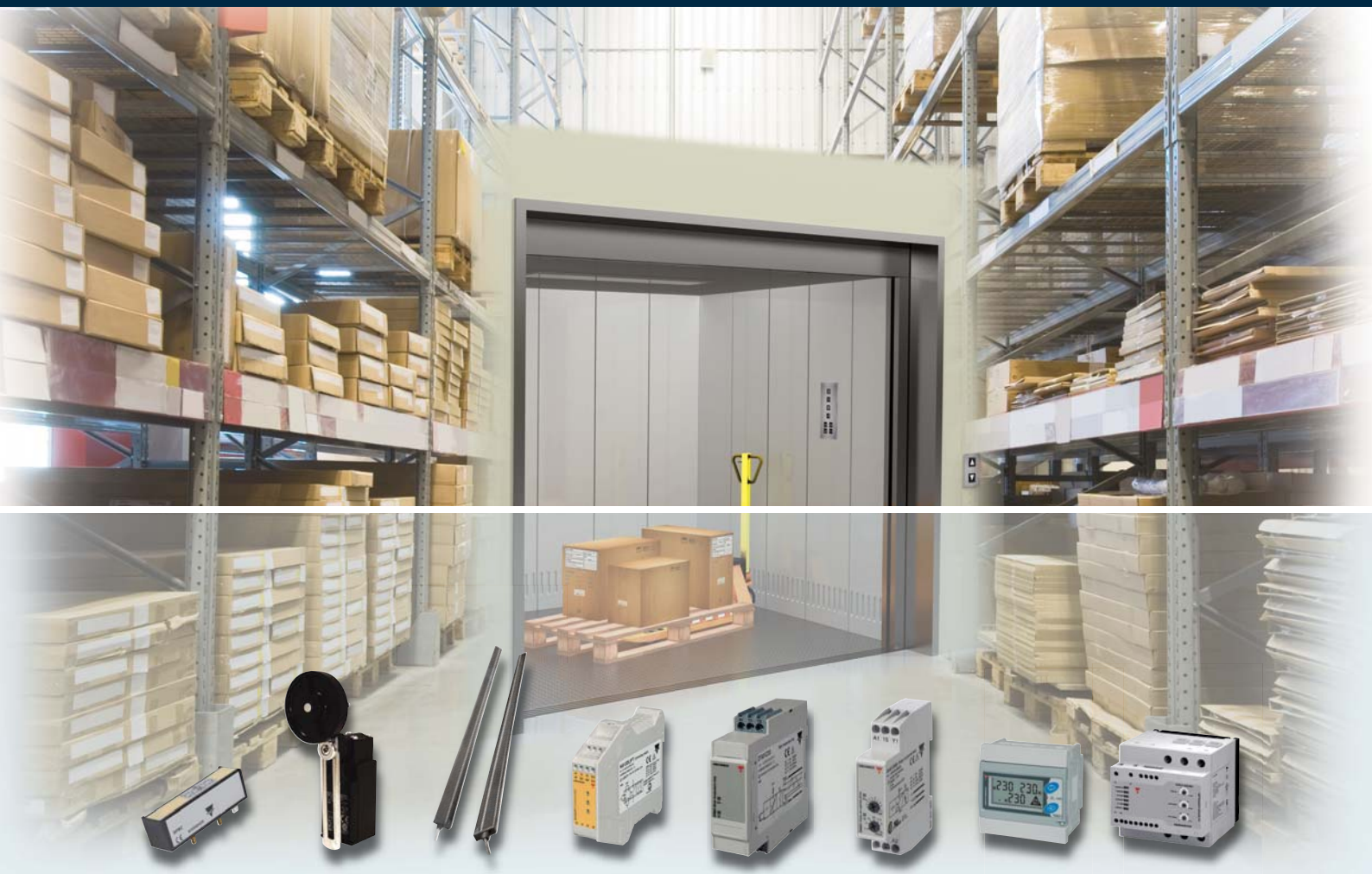
Monitoring relays provide additional control features to anticipate possible malfunctions in the escalator control and power system such as over/under voltage/current, phase loss, abnormal phase sequence and motor overheating, etc.

For escalator control panels, the Carlo Gavazzi offer includes industrial mechanical relays; timers/counters; safety modules and many other devices.



Lifts & Escalators

Goods lift



Proximity magnetic sensors

SPB2
FMP

Limit switches

PS

Light curtains for lift

BFL

Safety modules

NA12DLIFT

Monitoring Relays

DPA51
DPA53
DTA01

Timers

DAA51
DMB51

Energy meters

EM21

Soft starters

RSHR
RSDR

Built to withstand the rigours of harsh working environments, goods lifts are particularly suitable for use in industrial and commercial stores. They are ideal for locations requiring efficient transfer of goods from one floor to another, such as shopping malls, department stores, hotel and leisure establishments.

There are many different types of goods lift: rope or hydraulic lifts, miniature lifts of the kind used in restaurants to carry food, or huge lifts for cars or lorries. The only thing they have in common is that normally they are not used to carry people (unless they have to drive cars in and out of the cabin). Construction characteristics may differ from those of a standard lift, like the absence of a

segregated shaft or cabin doors. For this reason, Carlo Gavazzi recommends use of special components in addition to the features available on standard electrical or hydraulic lifts. For instance, the BFL light curtain can be used to monitor the platform edges (when there are no cabin walls) and avoid contact between the goods in the lift and external objects, or to monitor the space below the cabin (to keep the space clear and avoid the risk of injury). In these cases, the availability of two different shapes ensures a better match with space constraints, while the customised length option makes the fitter's job easier and more effective. For hydraulic lifts, the NA12DLIFT is an

even more important component than for ordinary lifts, to correct sudden shifts of position caused by platform loading and unloading. And for large oil pump motors, our RSHR and RSDR soft-starters help reduce the starting current and mitigate mechanical stress on all components.



Dupline® bus technology



Dupline master modules

G349600..700

Dupline master modules

G219600..700

Dupline I/O modules

G21404421700

Dupline I/O modules

G214055.0700

Dupline Output modules

G213055.1700

Dupline Input modules

G213055.1700

The wiring of traditional elevator control systems is quite expensive and complex. Each push button, lamp, floor indicator etc. needs its own wiring, which makes the initial installation cost high. Expansion is also a problem and even ongoing maintenance costs are expensive.

With Dupline®, Carlo Gavazzi offers a complete bus solution which is ready-to-use for small as well as medium-sized and large elevator companies. Dupline® can be easily applied in all phases of a project and does not require PCs or other advanced equipment, which most elevator installers are not trained to use.

Space- and cost saving I/O boards with 2 inputs and 2 outputs are mounted in each floor fixture and connected to the pushbuttons and lamps. In the elevator car, where the number of signals is higher, boards with 4 or 8 inputs /outputs are used.

Mounting the I/O boards into the fixtures, assigning addresses to them and wiring them to the pushbuttons and lamps can be done at the factory, where the labour cost is lower than on-site. Moreover, the wiring on-site is simply a question of dropping a 3-wire cable from top to bottom and connecting it to the I/O boards at the floors and in the car. It is fast and the risk of wiring mistakes is low.

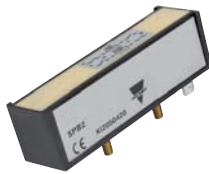
The 3-wire cable provides each I/O board with 24 VDC power supply and bi-directional communication to the elevator controller.

The Master module interfaces Dupline® to any elevator controller with a RS232 or RS485 port. Dedicated plug & play versions have been developed for all major PLC brands. The Dupline® data automatically becomes accessible in the PLC memory as soon as it is connected. Dupline® is used in more than 1500 new elevators each year and the number is growing continuously. There is a very positive feedback from the users, who appreciate the simplicity, reliability and cost-effectiveness of Dupline® bus system.

Lifts & Escalators

Our product range

Cylindrical Proximity Magnetic Sensors	Cylindrical Proximity Magnetic Sensors	Inductive Proximity Sensors
<p>SPB2</p> <ul style="list-style-type: none"> • Dimensions: 85 x 24 x 25.5 mm • Housing material: plastic with two metal shielded sides • Operating distance: 5 - 30 (mm) • Output function: bistable • Degree of protection: IP 65 (SPB2) - IP67 (SPB2MT) <p>MAIN FEATURES</p> <ul style="list-style-type: none"> • Easy and fast mounting • Cable or faston connector output • Reduced magnetic interference when mounted side by side with other sensors 	<p>FMP</p> <ul style="list-style-type: none"> • Housing material: plastic with M12 diameter • Operating distance: 7 - 26 (mm) • Output functions: NO, NC, bistable or CO • Front side switching • Degree of protection: IP 67 <p>MAIN FEATURES</p> <ul style="list-style-type: none"> • Different housing colours based on the output function • Threaded body and two plastic nuts included for easy mounting • Supports and brackets for simple sensor positioning (on request) 	<p>ICB12</p> <ul style="list-style-type: none"> • Nickel-brass housing in short or long barrel lengths • Standard and double distance sensing ranges • Output functions: NO or NC, NPN or PNP • Two meter PVC cable or M12 plug version • Protection: reverse polarity, short circuit, transients <p>MAIN FEATURES</p> <ul style="list-style-type: none"> • High performance potting material made from recycled corn by-product • Air-core sensing coil with higher immunity to magnetic fields • Highest reliability, stability and resistance to mechanical stress



Photoelectric Sensors	Photoelectric Sensors	Photoelectric Sensors
<p>PE12</p> <ul style="list-style-type: none"> • Dimensions Ø12 x 29 mm Click-in • Through-beam sensors, 15m sensing distance • Cable or pig-tail versions • Power supply from 10 to 30 VDC • CE and cULus <p>MAIN FEATURES</p> <ul style="list-style-type: none"> • Detects interruptions of the light beam • Fast mounting, ESPE2 viewing angle • Plug and play: no settings needed 	<p>PD70</p> <ul style="list-style-type: none"> • Dimensions 11.6 x 11.6 x 70 mm • Through-beam sensors, 12m sensing distance • Cable or M8 plug versions • Power supply from 10 to 30 VDC • CE and cULus <p>MAIN FEATURES</p> <ul style="list-style-type: none"> • Detects interruptions of the light beam • Slim housing, ESPE2 viewing angle • Plug and play: no settings needed 	<p>PA18</p> <ul style="list-style-type: none"> • Dimensions M18 x 39 mm • Diffuse reflective sensors, 1 m detecting distance • Cable or M12 plug versions • Power supply from 10 to 30 VDC • CE and cULus <p>MAIN FEATURES</p> <ul style="list-style-type: none"> • Sensors used to directly detect human presence • Fast mounting, smooth finish • Sensitivity adjustment



Our product range

Light curtains for Lift	Radar Sensors	Safety Modules
-------------------------	---------------	----------------

BFL1x4E200 /BFL1x4S200

- Side and Edge versions
- Timeout and blanking function
- Configurable output
- Extended power supply range
- UL, CSA approved

MAIN FEATURES

- 1 item with 6 configurable outputs
- Voltage free output: no need for external boxes
- Plastic housing for a galvanic insulation

RAD01/RAD02

- Dimensions 118 x 80 x 53 mm
- K-Band radar sensor,
- Up to 4 m mounting height
- Power supply from 12 to 24 VAC/DC
- CE, cURus and FCC

MAIN FEATURES

- RAD01 Bi-directional detection
- RAD02 Uni-directional detection
- RAD02 Lateral traffic suppression
- IR-Remote control functionality

NA12DLIFT

- Lift cabin levelling module
- Input from magnetic sensors
- Feedback circuit for external contactor monitoring
- 24V AC/DC power supply voltage
- 2 safety relay outputs

MAIN FEATURES

- Certified according to the Lift Directive
- Only 22 mm wide
- Plug and play : no settings needed



Safety Modules	Monitoring Relays	Monitoring Relays
----------------	-------------------	-------------------

NLG13

- Safety module for light curtains in home lift
- Performance level "e" (cat.4)
- PNP inputs
- 24V DC power supply voltage
- 3 safety relay outputs

MAIN FEATURES

- Certified according to the Machine Directive
- Only 22 mm wide
- BFL + NLG certified

DPA51

- Dimensions 81x17,5x67,2mm DIN-rail housing
- Phase sequence and loss relay
- 3 phase AC (own power supply); regenerated voltage
- Power supply from 208 to 480 VAC ($\pm 15\%$)
- UL, CSA and CCC approved

MAIN FEATURES

- Motor protection from reverse running and phase loss
- 17.5 mm width: the smallest on the market
- Plug and play: no settings needed

DPA53

- Dimensions 81x17,5x67,2mm DIN-rail housing
- Phase sequence, loss and undervoltage relay
- 3 phase AC (own power supply)
- Power supply from 208 to 480 VAC (2 models)
- UL, CSA and CCC approved

MAIN FEATURES

- Motor protection from reverse running and wrong phase voltage
- 17.5 mm width: the smallest on the market
- Plug and play: only undervoltage threshold to be set



Lifts & Escalators

Our product range

Monitoring Relays

DTA/PPA 01/02

- Dimensions 22.5 mm Euronorm for DIN-rail or 36 mm plug-in version
- Motor temperature relay
- Measuring ranges: PTC according to EN 44081
- Power supply: 24 to 48 VAC/DC, 110, 230 VAC
- UL, CSA approved

MAIN FEATURES

- Protection from high temperatures of the coils of a motor with built-in PTCs.
- Alarm resettable by external contactor or reset button
- Test button allowing the simulation of the fault condition

Timers

DAA51, DMB51

- Dimensions 81x17,5x67,2mm DIN-rail housing
- Delay on operating function (DAA), multifunction (DMB)
- Combined AC and DC power supply
- Repeatability: < 0.2%
- UL, CSA, RINA approved

MAIN FEATURES

- Delay on operate/release; interval (manual/automatic start);
- Double interval; symmetrical recycler (ON or OFF first)
- Timing range from 0.1s to 100h

Dupline Master Modules

G349600..700

- Dimensions 77x72x70 mm DIN-rail housing
- Generates Dupline carrier signal
- RS485/RS232 interface for Lift Controller
- Power supply from 20 to 30 VDC
- Synchronizes 24 VDC power supply with Dupline

MAIN FEATURES

- Generates 3-wire system with power and communication
- Plug&Play versions available for specific PLC brands
- Possibility to multidrop up to 16 units as modbus slaves



Dupline Master Modules

G219600..700

- Dimensions 86x54 mm Open PCB
- Generates Dupline carrier signal
- RS485 interface for Lift Controller
- Power supply from 20 to 30 VDC
- Synchronizes 24 VDC power supply with Dupline

MAIN FEATURES

- Generates 3-wire system with power and communication
- Plug&Play versions available for specific PLC brands
- Possibility to multidrop up to 16 units as modbus slaves

Dupline I/O modules

G21404421700

- Dimensions 54x40 mm Open PCB
- 2 contact inputs
- 2 PNP transistor outputs
- Powered by Dupline 3-wire bus
- LED indications for supply and carrier

MAIN FEATURES

- Used as interface for buttons and lamps at landing stations
- Input pulse prolongation to catch short button activations
- Simplifies the wiring to the Lift Controller

Dupline I/O module

G214055.0700

- Dimensions 74x59 mm Open PCB
- 4 contact inputs
- 4 PNP transistor outputs
- Powered by Dupline 3-wire bus
- LED indications for supply and carrier

MAIN FEATURES

- Used as interface for buttons and lamps in the car
- Input pulse prolongation to catch short button activations
- Simplifies the wiring to the Lift Controller



Our product range

Dupline Output module	Dupline Input modules	Energy Meters
<p>G213055.1700</p> <ul style="list-style-type: none"> • Dimensions 74x59 mm Open PCB • 8 PNP or NPN transistor outputs • Powered by Dupline 3-wire bus • LED indications for supply and carrier • Operating temperature -20 C to 50C <p>MAIN FEATURES</p> <ul style="list-style-type: none"> • Used as interface for floor indicators • The same 8 Dupline addresses can be used for all floor indicators • Simplifies the wiring to the Lift Controller 	<p>G213055.1700</p> <ul style="list-style-type: none"> • Dimensions 74x59 mm Open PCB • 8 contact or voltage inputs • Powered by Dupline 3-wire bus • LED indications for supply and carrier • Operating temperature -20 C to 50C <p>MAIN FEATURES</p> <ul style="list-style-type: none"> • Used as general purpose inputs • Input pulse prolongation to catch short button activations • Simplifies the wiring to the Lift Controller 	<p>EM23</p> <ul style="list-style-type: none"> • 3-phase energy meters with direct connection • Direct connection up to 65 A • Dimensions 4-DIN rail module housings • Class 1 (kWh) acc. to EN62053-1 • Pulse open collector output <p>MAIN FEATURES</p> <ul style="list-style-type: none"> • Direct measurement in a very compact housing to save space • Allows local energy allocation for cost allocation purposes • On request, MID annex D certification available



Energy Meters	Power Transducer	Switching Power Supplies
<p>EM2172D, EM2172R</p> <ul style="list-style-type: none"> • 3-phase energy meters with CT connection • Solid or split-core 5A CT (72D) or split-core current sensors (72R) • Dimensions 4-DIN rail module or 72x72 mm housing • Class 1 (kWh) acc. to EN62053-1 • Pulse open collector or serial RS485 output <p>MAIN FEATURES</p> <ul style="list-style-type: none"> • Very compact and space saving meter • The same meter can be installed both on DIN-rail or on the panel • Available as a kit including 3 split-core current sensors (90, 150 or 250 A) 	<p>CPT</p> <ul style="list-style-type: none"> • Dimensions 83.5x45x98.5mm DIN-rail housing • Accuracy 0.5 % (voltage, current) • Measurement by CT and VT • Front protection degree IP20 • Analogue, digital, pulse or serial outputs available <p>MAIN FEATURES</p> <ul style="list-style-type: none"> • Very compact power transducer • Provides electrical variables set to a PLC to manage compressors and other loads • Suitable for on-board panel installation 	<p>SPD</p> <ul style="list-style-type: none"> • DIN-rail housing • Short circuit protection • 1-phase AC • Rated input voltage: 115/230 VAC selectable 100/240 VAC • UL, cUL listed and TÜV/CE approved <p>MAIN FEATURES</p> <ul style="list-style-type: none"> • Overload protection • Parallel versions available • High efficiency



Lifts & Escalators

Our product range

3-phase 7.5kW soft starters

RSHR

- Operational Voltage: Up to 600 VAC 50/60 Hz
- Motor Rating: 3-phase up to 22 kW @ 400 V
- Ramp up time: 1 - 10 sec
- Ramp down time: 1 - 30 sec
- UL, cUL, CSA approvals

MAIN FEATURES

- Up to 50 starts per hour
- Wide range of operating temperature: -20°C to +60°C
- Internally bypassed: less heat dissipation



3-phase 280kW soft starters

RSDR

- Motor Rating: Up to 280 kW @400 V
- Ramp up time: 0.5 - 30 sec
- Internally bypassed
- 6-wire connection capability
- UL approved

MAIN FEATURES

- Multi voltage operation: 230 - 460 VAC, 50/60 Hz
- Auxiliary relays for top of ramp and alarms



Limit Switches

PS...

- Over 50 different head types
- Thermoplastic or metal housing
- 10 contact block types
- 10A contact rating
- Degree of protection IP67

MAIN FEATURES

- over 1.000.000 life cycles
- 4 families featuring over 8000 different types
- Prewired version



Counters

FSA01, FSA02

- 24 x 48 mm housing
- Counting up to 100,000 hours
- Battery lifetime 8 years
- NPN/PNP or AC/DC inputs
- Reset button with locking function

MAIN FEATURES

- Preventive maintenance ensured
- Can be connected straight to the pump for time counting
- Front IP65 protection for all environments



Industrial Relays

RMI ...

- 2 or 3 poles
- Max load: 12A / 250VAC
- DC coils: 6 ÷ 110VDC
- AC coils: 6 ÷ 230VAC
- Degree of protection IP40

MAIN FEATURES

- High switching power
- Long life (minimum 100.000 electrical ops.)
- Standard with LED, Push with arm and Flag



OUR SALES NETWORK IN EUROPE

AUSTRIA - Carlo Gavazzi GmbH
Ketzergrasse 374, A-1230 Wien
Tel: +43 1 888 4112
Fax: +43 1 889 10 53
office@carlogavazzi.at

BELGIUM - Carlo Gavazzi NV/SA
Schaarbeeklei 213/3, B-1800 Vilvoorde
Tel: +32 2 257 4120
Fax: +32 2 257 41 25
sales@carlogavazzi.be

DENMARK - Carlo Gavazzi Handel A/S
Over Hadstjenvej 40, DK-8370 Hadsten
Tel: +45 89 60 6100
Fax: +45 86 98 15 30
handel@gavazzi.dk

FINLAND - Carlo Gavazzi OY AB
Petaksentie 2-4, FI-00661 Helsinki
Tel: +358 9 756 2000
Fax: +358 9 756 20010
myynti@carlogavazzi.fi

FRANCE - Carlo Gavazzi Sarl
Zac de Paris Nord II, 69, rue de la Belle
Etoile, F-95956 Roissy CDG Cedex
Tel: +33 1 49 38 98 60
Fax: +33 1 48 63 27 43
french.team@carlogavazzi.fr

GERMANY - Carlo Gavazzi GmbH
Pfnorstr. 10-14
D-64293 Darmstadt
Tel: +49 6151 81000
Fax: +49 6151 81 00 40
info@gavazzi.de

GREAT BRITAIN - Carlo Gavazzi UK Ltd
7 Springlakes Industrial Estate,
Deadbrook Lane, Hants GU12 4UH,
GB-Aldershot
Tel: +44 1 252 339600
Fax: +44 1 252 326 799
sales@carlogavazzi.co.uk

ITALY - Carlo Gavazzi SpA
Via Milano 13, I-20020 Lainate
Tel: +39 02 931 761
Fax: +39 02 931 763 01
info@gavazziacbu.it

NETHERLANDS - Carlo Gavazzi BV
Wijkermeerweg 23,
NL-1948 NT Beverwijk
Tel: +31 251 22 9345
Fax: +31 251 22 60 55
info@carlogavazzi.nl

NORWAY - Carlo Gavazzi AS
Melkeveien 13, N-3919 Porsgrunn
Tel: +47 35 93 0800
Fax: +47 35 93 08 01
gavazzi@carlogavazzi.no

PORTUGAL - Carlo Gavazzi Lda
Rua dos Jerónimos 38-B,
P-1400-212 Lisboa
Tel: +351 21 361 7060
Fax: +351 21 362 13 73
carlogavazzi@carlogavazzi.pt

SPAIN - Carlo Gavazzi SA
Avda. Iparraguirre, 80-82,
E-48940 Leioa (Bizkaia)
Tel: +34 94 480 4037
Fax: +34 94 480 10 61
gavazzi@gavazzi.es

SWEDEN - Carlo Gavazzi AB
V:a Kyrkogatan 1,
S-652 24 Karlstad
Tel: +46 54 85 1125
Fax: +46 54 85 11 77
info@carlogavazzi.se

SWITZERLAND - Carlo Gavazzi AG
Verkauf Schweiz/Vente Suisse
Sumpfstrasse 32,
CH-6312 Steinhausen
Tel: +41 41 747 4535
Fax: +41 41 740 45 40
info@carlogavazzi.ch

OUR SALES NETWORK IN NORTH AMERICA

USA - Carlo Gavazzi Inc.
750 Hastings Lane,
USA-Buffalo Grove, IL 60089,
Tel: +1 847 465 6100
Fax: +1 847 465 7373
sales@carlogavazzi.com

CANADA - Carlo Gavazzi Inc.
2660 Meadowvale Boulevard,
CDN-Mississauga Ontario L5N 6M6,
Tel: +1 905 542 0979
Fax: +1 905 542 22 48
gavazzi@carlogavazzi.com

MEXICO - Carlo Gavazzi Mexico S.A. de C.V.
Calle La Montaña no. 28, Fracc. Los Pastores
Naucalpan de Juárez, EDOMEX CP 53340
Tel & Fax: +52.55.5373.7042
mexicosales@carlogavazzi.com

OUR SALES NETWORK IN ASIA AND PACIFIC

SINGAPORE - Carlo Gavazzi Automation
Singapore Pte. Ltd.
61 Tai Seng Avenue
#05-06 UE Print Media Hub
Singapore 534167
Tel: +65 67 466 990
Fax: +65 67 461 980

MALAYSIA - Carlo Gavazzi Automation
(M) SDN. BHD.
D12-06-G, Block D12,
Pusat Perdagangan Dana 1,
Jalan PJU 1A/46, 47301 Petaling Jaya,
Selangor, Malaysia.
Tel: +60 3 7842 7299
Fax: +60 3 7842 7399

CHINA - Carlo Gavazzi Automation
(China) Co. Ltd.
Unit 2308, 23/F.,
News Building, Block 1, 1002
Middle Shennan Zhong Road,
Shenzhen, China
Tel: +86 755 83699500
Fax: +86 755 83699300

HONG KONG - Carlo Gavazzi
Automation Hong Kong Ltd.
Unit 3 12/F Crown Industrial Bldg.,
106 How Ming St., Kwun Tong,
Kowloon, Hong Kong
Tel: +852 23041228
Fax: +852 23443689

OUR COMPETENCE CENTRES AND PRODUCTION SITES

Carlo Gavazzi Industri A/S
Hadsten - **DENMARK**

Carlo Gavazzi Ltd
Zejtun - **MALTA**

Carlo Gavazzi Controls SpA
Belluno - **ITALY**

Uab Carlo Gavazzi Industri Kaunas
Kaunas - **LITHUANIA**

Carlo Gavazzi Automation
(Kunshan) Co., Ltd.
Kunshan - **CHINA**

HEADQUARTERS

Carlo Gavazzi Automation SpA
Via Milano, 13 - I-20020
Lainate (MI) - **ITALY**
Tel: +39 02 931 761
info@gavazziautomation.com



CARLO GAVAZZI
Automation Components

Energy to Components!

www.gavazziautomation.com

