

FLUXTRAINER

for hyperspectral imaging



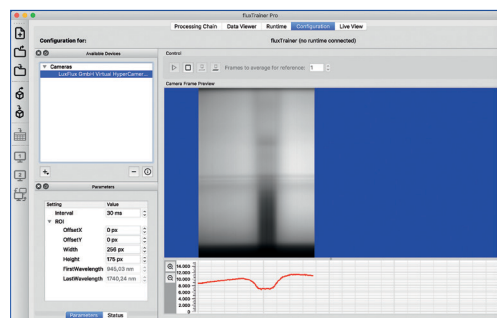
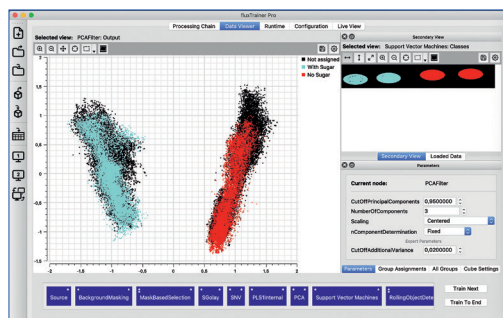
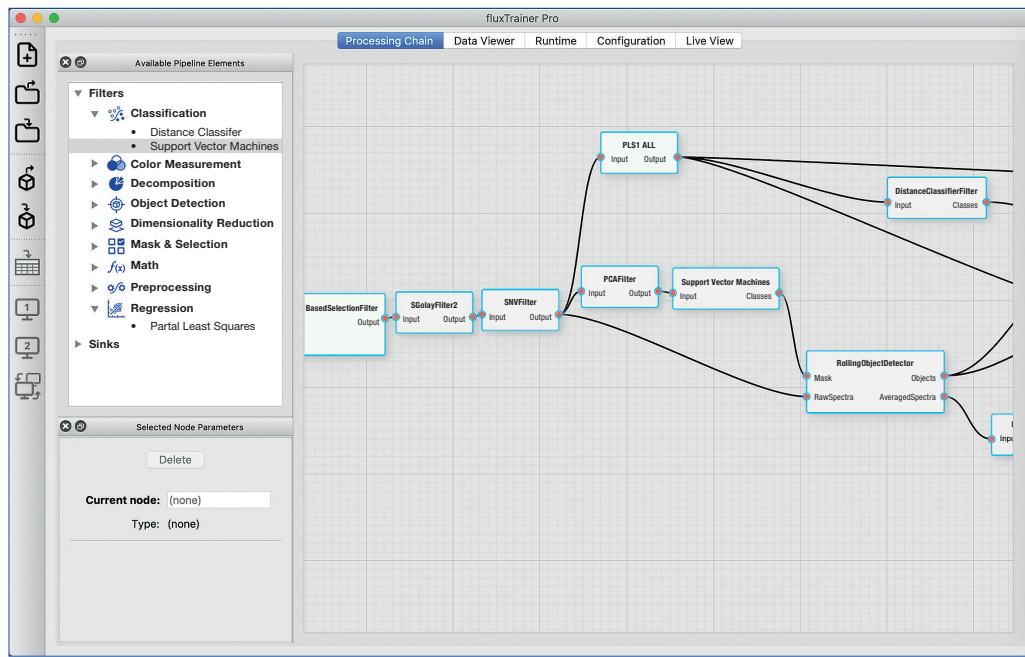
FEATURES

- Certifiable Work Flows
- Graphical Programming to Develop Models
- Push Models to Runtime
- Supports Industry Vision Standards
- Runs on ARM, Intel, AMD, GPU, Supports Multi-Threading
- Runs on Windows, Linux, Mac

ALGORITHMS

- Color Measurement
- Selection
- Dimensionality Reduction
- Image Operation
- Preprocessing
- Classification
- Regression
- Mathematical Functions
- Object Detection
- Decomposition

USER INTERFACE



luxflux
Discover the invisible

LuxFlux GmbH
Gerhard-Kindler-Straße 13
72770 Reutlingen
Germany
+49 7121 696360 0
info@luxflux.de
www.luxflux.de