

Technical data

Assembly Instructions / Cable Connection



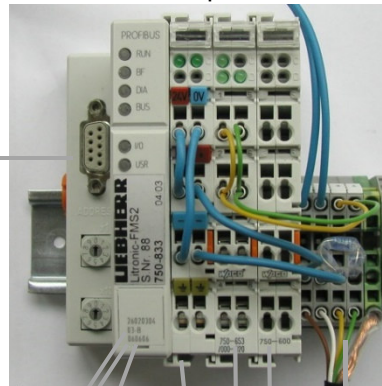
Profibus DP

Measurement value transfer. Material curves change over.

Litronic-FMS II PC Software

Measured value display, calibration, set-up, material curves, recording

Interchange and evaluation unit modular expandable

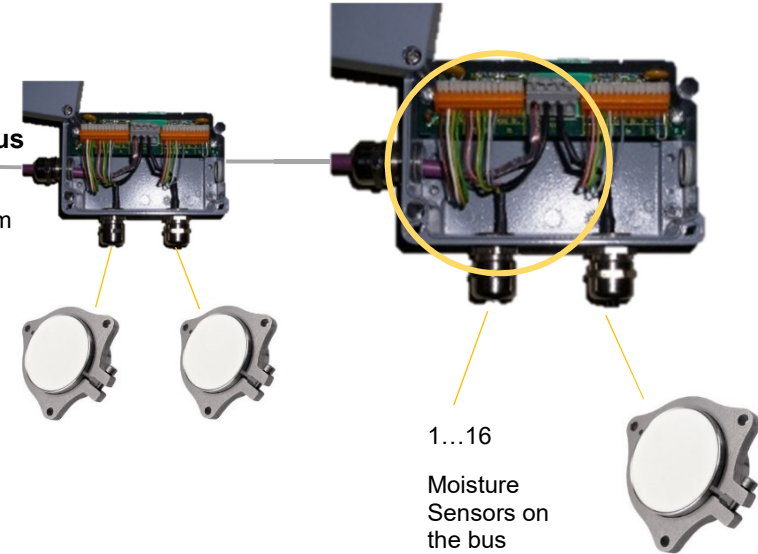


Power pack 24V DC



Sensor bus

Bus length max. 1200m



Bus cable:

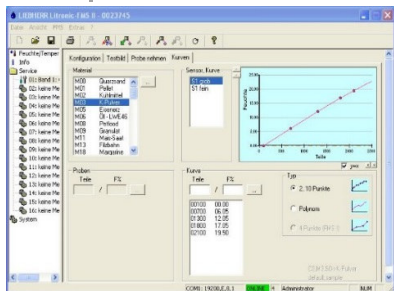
Brown: +
white: -
yellow: Bus A
green: Bus B
Pigtail

1...16
Moisture
Sensors on
the bus

Direct sensor connection
without bus connection box

Analogue measured value output 0-10V, 4-20mA. Digital inputs for Start/Stop control and material curve change over. Digital outputs for limit signal.

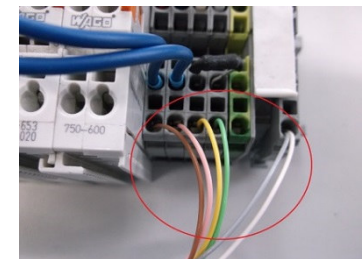
USB



WLAN



Connection via Bluetooth



Sensor cable

Brown: +
pink: -
yellow: Bus A
green: Bus B
grey + white: address 1