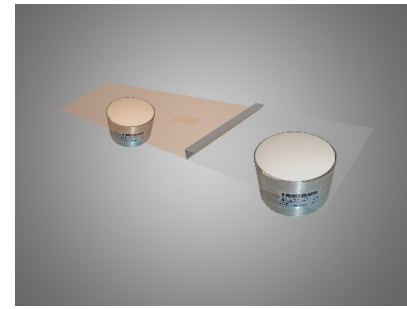
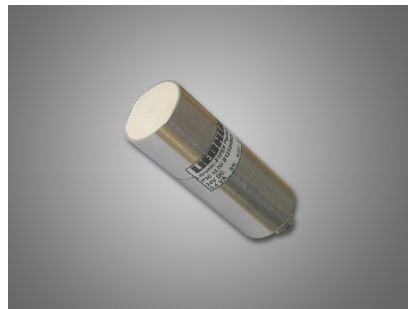


## InSitu moisture measurement system type Litronic-FMS II

**LIEBHERR**



# System overview

- **An autonomous stand-alone system with a world of possibilities**
- Highest quality and best results during process are guaranteed by an exact material moisture measurement. The Litronic-FMS II will meet your requirements in any case. A very comfortable PC-software enables a fast and exact calibration.
- **Features**
  - modular design
  - very hard-wearing sensors
  - exact accuracy (up to 0,05 % water content)
  - switchable material curves
  - measurement range of 0 – 100 % water content
  - completely reproducible
  - many opportunities of signal transfer (4-20 mA, 0-10 V, Profibus...)
  - networking of up to 16 sensors with one electronic

## Litronic moisture sensor FMS II

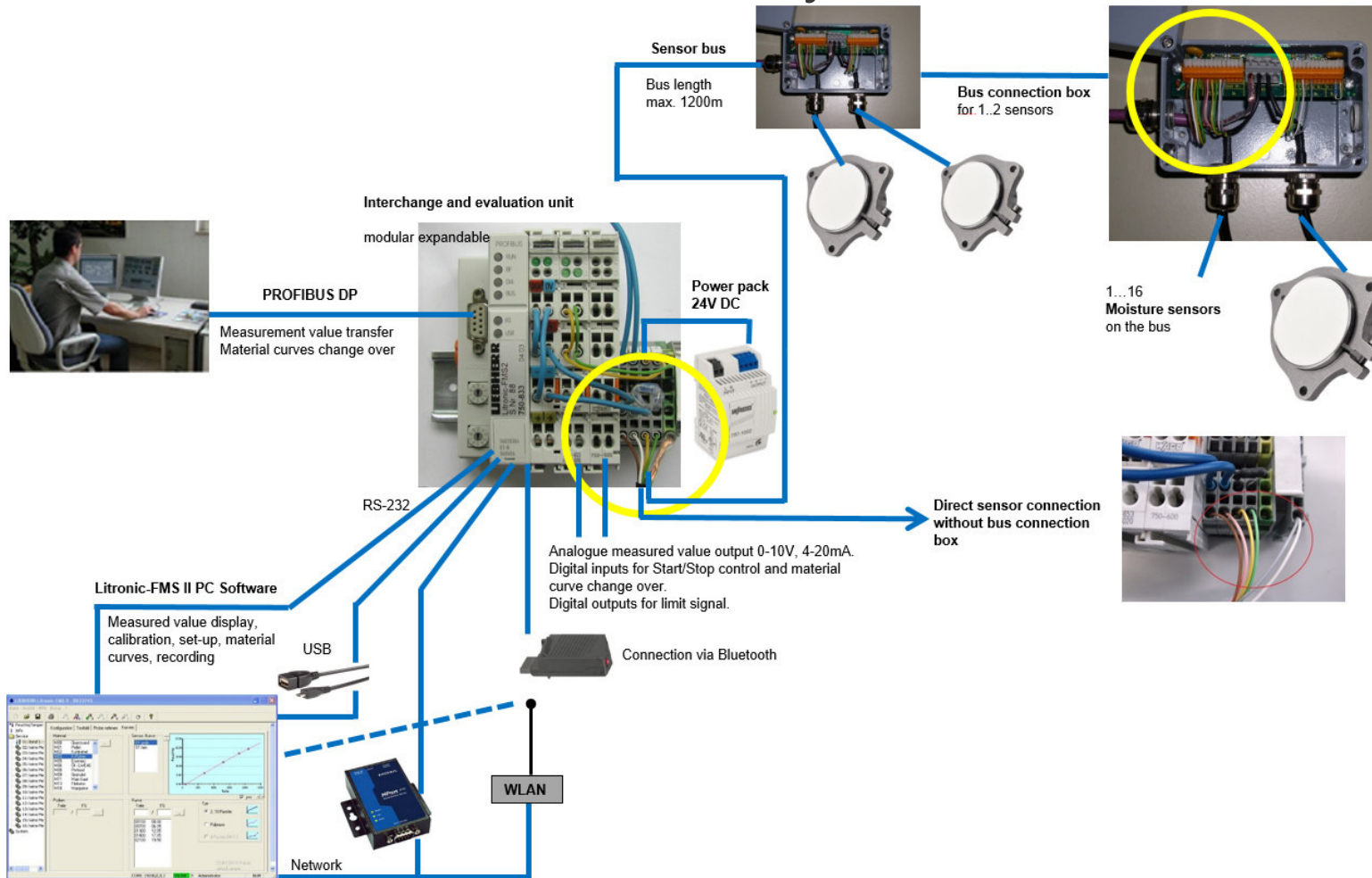
- Long service life
- Circonoxyd-Ceramic 2 mm
- Suitable for different built-in-methods
- Corrosion and Water proofed
- Reproducible for replacements
- High sampling rate



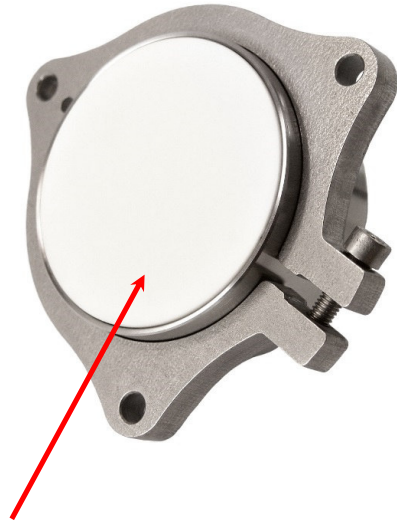
- Temperature recording
- Transfer of test signals
- Possibility of diagnosis
- High sensitivity (3 phases)
- Modern micro-electronic
- Less power consumption
- Compatible to Sensor I, Litronic FMS and FMG



# Litronic-FMS II moisture measurement system



## Liebherr wearing protection - Hardness



### Wearing protection:

- Material: Zirconia-Ceramic
- Thickness: 2mm (optional 10 mm)

Applications  
**Iron ore**



**The best solution for each application**

Applications

## Iron ore in sinter plant



Using of FMS II sensor with 10 mm wearing protection for very abrasive materials !!!

Ceramic sliding shoe provided by customer.

**The best solution for each application**

Applications  
**Coal**



**The best solution for each application**